



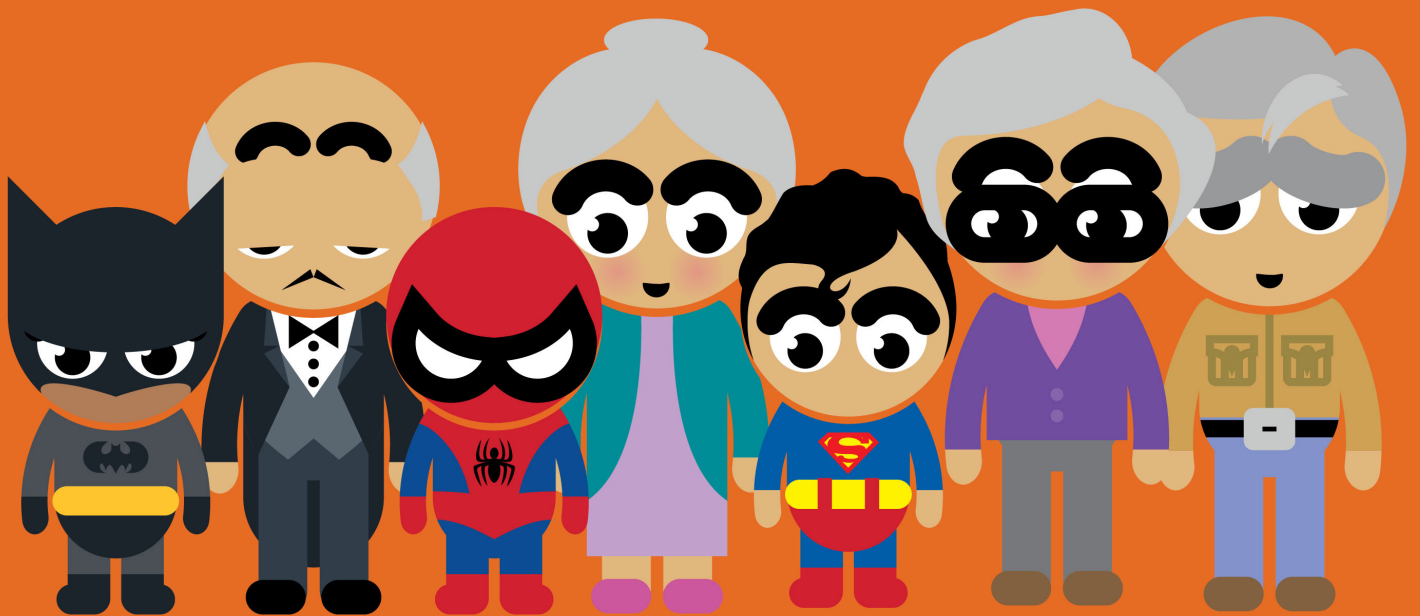
THE WOLVERINE

HELPING
CHILDREN
TO BE
VICTORS
SINCE
1987.


Wolverine
Human Services
Helping Children to be Victors

DONATE TO THE PIGGY BANK PROJECT

RECEIVE A CAPE IN RETURN!



HELP WOLVERINE HUMAN SERVICES RAISE SUPERHEROES!

**LEARN MORE ABOUT THE PIGGY BANK PROJECT
AND HOW IT SUPPORTS CHILDREN IN FOSTER CARE ON PAGE 21.**

TABLE OF CONTENTS

Letter from the CEO...	3
Our Mission & About Us...	5
Leadership Team...	6
Letter from the Board of Trustees...	7
Our Services...	8
Residential Treatment Services...	9
Community Based Programs...	11
Staff Accomplishments...	12
The Brands of Wolverine Human Services...	13
Core Orchards...	15
The DEN...	16
Michigan Counseling Centers...	17
Fresh Era...	18
Donation Opportunities...	19
Alumni Opportunity...	20
The Piggy Bank Project...	21
Leave a Legacy...	22
Facilities Map...	24
Donor Recognition...	25
Become a Care Provider...	28
Financial Report...	29
Join the Wolverine Human Services Team...	30



LETTER FROM THE CEO

Hello and Welcome to Wolverine Human Services!

Since 1987, Wolverine Human Services has become the largest child welfare agency providing treatment services to children and families of Michigan. Our Founder, Robert E. Wollack, MSW, began Wolverine after working in a variety of settings. Through his research and experience, Robert developed a treatment model which he believed would provide the best possible outcomes. After opening the flagship program on February 4, 1987, St. Jude's Home for Boys, Wolverine has grown significantly and has developed a vast array of treatment programs.

We currently have 19 different Treatment Programs at six sites, and four foster care and adoption offices. Our Residential Treatment Programs include Secure and Non Secure facilities for both males and females in Residential Foster Care, the Juvenile Justice system, and those in need of treatment for Behavioral Health and Substance Abuse. Our Community Based Programs include Foster Care, Adoption, and Teen Support Services. We are a state wide agency having served children from all 83 counties in Michigan. We also now provide secured treatment to children from other states throughout the country.

We have achieved our success by being flexible and taking calculated risks. We have been asked over the years by the Department of Health and Human Services and counties to develop programs to meet the ever changing and growing needs of your youth in crisis. And we have been able to accomplish that.

Our latest challenge was to incorporate Evidence Based Treatment Practices to meet the needs of youth who have experienced trauma and are diagnosed with Behavioral Health Disorders. Partnering with the Beck Institute for Cognitive Behavioral Therapy and Indiana University, we are finishing a five year project, being the first residential agency to integrate the model into our treatment setting with fidelity and integrity. All staff, from cooks to therapists, are CBT competent in core skills to create a true CBT embedded residential program. This is the first of its kind and we aren't just saying we practice these skills, we are applying these skills every single day.

In the field of child welfare, things are always changing. At Wolverine Human Services, we want to be the model for the change that is to come. We are truly dedicated to our children and their families, and are always striving to be the very best we can be. By dedicating ourselves to the needs of any child and any parent at any time, we truly are Helping Children to be Victors!

Sincerely,

Judith Fischer Wollack, MSW
CEO, Wolverine Human Services



OUR MISSION & ABOUT US

OUR MISSION

At Wolverine Human Services, our mission is Helping Children to be Victors.

ABOUT US

Wolverine Human Services is the largest child welfare agency providing the full continuum of care to children in Michigan. WHS offers both Residential Treatment and Community Based Programs to children and families in all 83 counties of the state. Residential Treatment includes programs in Behavioral Health, Substance Abuse, Juvenile Justice, and Residential Foster Care. Community Based Programs include Foster Care, Adoption, Teen Support Services, and Young Adult Voluntary Foster Care. WHS also supports the community through a weekly food distribution program and a soup kitchen open on the weekends.

To further engage with the community, Wolverine Human Services has also developed four other organizations throughout the state: Core Orchards, The DEN, Michigan Counseling Centers, and Fresh Era. Core Orchards seeks to provide access to education and nutrition through community apple orchards. The DEN is a non-profit accelerator and co-working space for individuals and groups hoping to give back to their community. Michigan Counseling Centers provides out-patient counseling services to anyone in need of support and treatment, specifically past clients and their families. Fresh Era is a group of young professionals networking and volunteering in Detroit and its neighboring areas.

Over the years and as we continue to expand our services and programs, our mission remains the same—Helping Children to be Victors.



LEADERSHIP TEAM



THE EXECUTIVE TEAM

Robert E. Wollack, President

Judith Fischer Wollack, Chief Executive Officer

Derrick McCree, Senior Vice President

Chris Holmes, Chief Financial Officer

Lisa Brink, Vice President of Business

Matthew Wollack, Vice President of Strategic Development

Thomas Krolicki, Vice President of Community Based Programs and Chief Operating Office of Michigan Counseling Centers

Annet M. Schlosser, Vice President of Human Resources

THE BOARD OF TRUSTEES

Bruce A. Kintz, CLU, Chairman, Secure Harbor Financial Services

Ronald Warhurst, First Vice-Chairman

Robert E. Wollack, Second Vice-Chairman, Wolverine Human Services

Gerard Meter, Treasurer, Steelcase, Inc.

James Libs, Secretary, Brown & Brown of Detroit

John Wangler, Trustee, TopCat Sales

Karen Paciorek, Ph.D., Trustee, Eastern Michigan University

Vincent J. Brennan, Trustee, Denali Energy

Martin F. Daly, Trustee, Daly Merritt, Inc.

Ritchie Piert, Trustee, Marjin Group

Warde Manuel, Trustee, University of Michigan

Jordan Morgan, Trustee, The Jordan Morgan Foundation

LETTER FROM THE BOARD OF TRUSTEES

For the past 31 years, Wolverine Human Services has demonstrated its unwavering commitment to at-risk youth and families in the State of Michigan. Our board members are proud and committed to a WHS family of dedicated professionals. Over the years, WHS has grown, downsized, created new outreach services, and developed new partnerships – while always providing quality, compassionate care that stays true to the core values and guiding principles of WHS. We support WHS and continue to seek opportunities to celebrate many stories of hope and success.

Today, more than ever, vulnerable youth and families in Michigan need programs and services to support them on their path to success. Whether it comes in the form of advocacy, legislation, case management, community outreach or direct counseling, the data show that Wolverine makes a difference. More than statistics, our success stories are the many personal tributes that may go unnoticed in public through our day to day work. But those successes never go unnoticed to our clients, families, and staff. We celebrate every victory, large and small.

Wolverine Human Services has our appreciation and gratitude for making a positive difference for so many youth who need our support.

Sincerely and with our deepest thanks, we are Helping Children to be Victors!

Bruce A. Kintz, President, Secure Harbor Financial LLC
Chairman, Wolverine Human Services



OUR SERVICES



FOSTER CARE AND ADOPTION



**FAMILY
REUNIFICATION**



**TEEN SUPPORT
SERVICES**



**YOUNG ADULT
VOLUNTARY
FOSTER CARE**

BEHAVIORAL HEALTH, SUBSTANCE ABUSE, JUVENILE JUSTICE & RESIDENTIAL FOSTER CARE



**EMERGENCY
SHELTER**



**SECURE
TREATMENT**



**NON-SECURE
TREATMENT**



**SHORT-TERM
SHELTER AND
PLACEMENT**

RESIDENTIAL TREATMENT SERVICES

Behavioral Health Treatment

- *Foundations – Males 12-17 – Vassar, MI – Non-Secure*
- *Passages – Females 12-17 – Vassar, MI – Non-Secure*
- *Social & Behavioral Learning Center – Males 12-17 – Saginaw, MI – Secure*
- *Endeavors – Females 12-17 – Saginaw, MI – Secure*

Substance Abuse Treatment

- *Victor's Substance Abuse Treatment – Males 12-17 – Detroit, MI – Non-Secure*
- *WGRC Wolverine Center for Addiction Recovery & Education – Males 12-17 – Vassar, MI – Non-Secure*
- *Wolverine Center for Addiction Recovery & Education—Intensive – Males 12-17 – Vassar, MI – Non-Secure*
- *Wolverine Center for Addiction Recovery & Education—Intensive – Females – 12-17 – Vassar, MI – Non-Secure*
- *Wolverine Center for Addiction Recovery & Education – Males 12-17 – Saginaw, MI – Secure*

Juvenile Justice

- *Victor's Center PPN – Males 12-17 – Detroit, MI – Non-Secure*
- *Phoenix Sexual Offender Treatment – Males 12-17 – Vassar, MI – Non-Secure*
- *Journeys – Females 12-17 – Vassar, MI – Non-Secure*
- *Wolverine Sexual Aggression Recovery Program – Males 12-17 – Saginaw, MI – Secure*

Residential Foster Care

- *St Jude's - Males 12-17 – Detroit, MI – Non-Secure*
- *Detroit Shelter – Males 6-17 – Detroit, MI – Non-Secure*
- *Victor's Center Residential Foster Care – Males 12-17 – Detroit, MI – Non-Secure*
- *WGRC Residential Foster Care – Males 12-17 – Vassar, MI – Non-Secure*
- *Vassar Shelter – Males 12-17 – Vassar, MI – Non-Secure*
- *Wolverine Intensive Assessment Unit – Males 12-17 – Vassar, MI – Non-Secure*

CLIENT ACCOMPLISHMENTS 2017

30 HIGH SCHOOL GRADUATIONS

24 GED CERTIFICATES EARNED

**27 COLLEGE ENROLLMENTS WHILE
IN OUR CARE**

**81 COMPLETED PSYCHOLOGICAL
EVALUATIONS**

**484 CLIENTS RECEIVED ONGOING PSYCHIATRIC
CARE AND MEDICATION MANAGEMENT**

637 CLIENTS RECEIVED DENTAL CARE

603 CLIENTS RECEIVED OPHTHALMOLOGICAL CARE

277 CLIENTS RECEIVED NEW EYE GLASSES

**84% OF CLIENTS DISCHARGED COMPLETED OR WERE
ENROLLED IN SCHOOL WITHIN 60 DAYS OF DISCHARGE**

**72% OF CLIENTS DISCHARGED WERE ENGAGED IN OUTPATIENT
SERVICES IN THE COMMUNITY THEY RETURNED TO**

**79% OF CLIENTS DISCHARGED HAD NO NEW LAW
ENFORCEMENT CONTACT IN 60 DAYS POST-DISCHARGE**

COMMUNITY BASED PROGRAMS

Our Services

- **Foster Care:** A system in which a minor has been placed into a private home of a state-certified caregiver.
- **Adoption:** A process whereby a person assumes the parenting of a child from that person's biological or legal parent or parents.
- **Teen Support Services:** A system in which an adult provides a home and mentorship to a teen as they prepare for independence and adulthood.
- **Young Adult Voluntary Foster Care:** A voluntary system for individuals with an open foster care case or who exited foster care at/or after 18 years of age that supports youth in their transition to independence and adulthood.

CBP ACCOMPLISHMENTS 2017

20 Children Reunited with their Biological Families

51 Adoptions Finalized

8 Guardianships Achieved

73 Adoptions Started

67 New Care Providers

204 Active Care Providers

290 Children and Young Adults Serviced

1,160 Family Members Serviced

1,654 Individuals Serviced

STAFF ACCOMPLISHMENTS 2017

284 Staff Endorsed in Level 1 Cognitive Behavioral Therapy

375 Staff Certified in CPR

144 Staff Certified in Youth Mental Health First Aid

4 Staff Certified in Applied Suicide Intervention Skills Training

5 Staff Earned their CAADC

1 Staff Earned their LMSW

THE BRANDS OF WOLVERINE HUMAN SERVICES

What does a brand mean at Wolverine Human Services?

A brand is the representation and illustration of the various values that are shared at Wolverine Human Services.

What was the reason for creating the different brands of Wolverine Human Services?

The reason for creating the different brands of WHS was the opportunity for us to provide new services to the communities in which we serve.

How do all of the brands of WHS relate to one another?

Each organization is rooted in our goal of Helping Children to be Victors, whether it is providing opportunities for them and their families, treatment, clinical services, nutrition, or places to work and learn.

Which brand are you most excited about right now?

I'm excited about all of the brands right now because they all have unique things happening, including a tree planting in Detroit, opening up new offices, providing new services, and serving new populations.

What are the benefits of having multiple brands within WHS?

It allows Wolverine to connect with the community in ways that we would have never been able to do before. It also allows people that would otherwise not be connected with Wolverine to learn about how we are serving children, families, and the community.



Wolverine

Human Services

Helping Children to be Victors

Helping Children to be Victors

***COMMUNITY
APPLE ORCHARDS***



***NON-PROFIT ACCELERATOR
AND CO-WORKING SPACE***



***OUTPATIENT
COUNSELING SERVICES***



***YOUNG PROFESSIONALS
GROUP***

FRESH ERA

CORE ORCHARDS

What is your mission?

Our mission is to provide access, education, and opportunity to agriculture in the communities Wolverine Human Services serves.

What type of population do you serve and why?

We serve both the clients of Wolverine and our local communities. We believe the whole health of a child and family is core to success, and that includes understanding and access to proper nutrition.

Where are you located?

We are located in Detroit and Buena Vista.

What was a major milestone this year?

A major milestone this year was planting an apple orchard with over 5,000 apple trees in Buena Vista and also receiving approval to plant the first apple orchard within the city limits of Detroit.

What was an obstacle you overcame this year?

An obstacle we overcame this year was working with the City of Detroit's Urban Agriculture Ordinance to plant the first orchard with more than 9 fruit-bearing trees.

What does the future hold for Core Orchards?

This spring, we will be planting up to 250 trees in Detroit across the street from Wolverine Center on the Eastside of Detroit.



THE DEN

What is your mission?

Our mission is to offer a uniquely crafted, shared drop-in environment for individuals, small groups, and even large organizations that are driving to do good.

What type of population do you serve and why?

We serve individuals and businesses looking for affordable workspace. We also focus on start-up non-profits looking for help and guidance along their path. We felt it was necessary to give community members and people the opportunity to utilize our resources and expertise. We want to empower people to give back to their community.

Where are you located?

The DEN is located on Detroit's Eastside in the Jefferson Mack Community, as a part of the Wolverine Human Services' campus and home of Core Orchards Detroit.

What was a major milestone this year?

A major milestone this year was opening our doors in September, and our first non-profit, The Art Foundation, receiving official non-profit IRS status.

What was an obstacle you overcame this year?

An obstacle we overcame was coming up with a solution to provide the best security on our campus. We worked hand in hand with the Detroit Police Department to become the first non-profit with Project Greenlight, the live HD camera system monitored by DPD.

What does the future hold for The DEN?

The future holds activating our newly renovated soup kitchen for catering and food start-ups within the City of Detroit.



MICHIGAN COUNSELING CENTERS

What is your mission?

Our mission is to provide the community with the guidance and support needed to help resolve issues with life, relationships, and family.

What type of population do you serve and why?

We serve anyone in the community in need of outpatient counseling. Specifically, we focus on current families and past clients that are in need of additional support and treatment.

Where are you located?

MCC is currently offering services in Bloomfield Hills and Taylor.

What was a major milestone this year?

A major milestone this year was opening up two office locations to serve the community.

What was an obstacle that you overcame this year?

An obstacle we overcame this year was working with insurance providers to offer as many coverage options as possible to our clients.

What does the future hold for Michigan Counseling Centers?

The future holds additional locations in Flint and Warren.



FRESH ERA

What is your mission?

Our mission is to provide opportunities for young Metro-Detroiters to participate in the social and economic renaissance of the city.

What type of population do you serve and why?

We serve the needs of Wolverine's clients, as well as other local non-profits participating in the revitalization of the Detroit community. Wolverine Human Services has been an active community member in Detroit for over 30 years, and we believe it is critical to continue supporting the city where we started.

Where are you located?

We are located on Detroit's Eastside in the Jefferson Mack Community, as a part of the Wolverine Human Services' campus. Additionally, we participate in activities throughout Southeast Michigan.

What was a major milestone this year?

A major milestone this year was hosting the Comedy Central Detroit's season finale and cast wrap party with all proceeds going to Wolverine Center.

What was an obstacle that you overcame this year?

An obstacle we overcame this year was balancing work life, personal life, and philanthropy, however the job was always accomplished.

What does the future hold for Fresh Era?

The future holds distributing micro-grants to local non-profits so that they can continue to do good in the community. Each member of Fresh Era has the opportunity to vote on who will receive the quarterly funds.

FRESH ERA

FRESHERA.ORG

DONATION OPPORTUNITIES

The idea:

Choose the Wolverine Human Service program you would like to support through a donation.

How the money is used:

The money is used to support a WHS program of your choice: The Alumni Opportunity, The Piggy Bank Project, Memorial, Tributes and Planned Giving, or Core Orchards Detroit.



ALUMNI OPPORTUNITY

The Alumni Opportunity is a program that provides scholarships and services to past clients of Wolverine Human Services and their families.



THE PIGGY BANK PROJECT

The Piggy Bank Project is a program that provides gifts to children in foster care on a monthly basis.



LEAVE A LEGACY

Through Memorial, Tributes, and Planned Giving, honor people in your life through a retirement, estate, financial, or philanthropic plan.



CORE ORCHARDS

Core Orchards Detroit is the first community apple orchard in Detroit. By donating to Core Orchards, you can have an apple tree planted in your name.

THE ALUMNI OPPORTUNITY

The idea:

- Work with your business or family to support a child
- Make an annual donation to support or develop a scholarship
- Provide an opportunity for our alumni to continue their success in education and career

How the money is used:

Each year, WHS provides multiple scholarships to clients and their families who have successfully graduated from a treatment program or participated in one of our Community Based Programs.



THE WAYNE ANDERSON AWARD

This award is given to a WHS alumnus who has overcome many serious difficulties. In spite of these challenges, each award winner remained focused on his or her personal growth and maturation with the help of agency programs and our dedicated staff.



THE VICTORS AWARD

This award is presented to the WHS alumnus who experiences the most growth and general expansion of perspective through involvement in extra-curricular activities while in WHS programs, as these activities are recognized as an avenue for growth and self-discipline in our young clients.



WILLIAM L. TILTAN SCHOLARSHIP

This award is presented to a WHS alumnus who shows the most progress in higher education pursuits.



CREATE YOUR OWN AWARD OR SCHOLARSHIP

Create an award or scholarship of your choosing for a WHS alumnus.

THE BANK PROJECT

The idea:

- Use your piggy bank to collect donation money
- Empty it once a month and write Wolverine a check
- Teaches children how to save money while helping others

How the money is used:

Each month, Wolverine will send all of their foster children a themed package with items that they may not have access to otherwise.

JANUARY

SNOW TOYS



FEBRUARY

VALENTINE'S SURPRISE



MARCH

KITES / ARTS & CRAFTS



APRIL

RAIN COAT / RAIN BOOTS



MAY

BIKE AND HELMET



JUNE

BATHING SUIT & BEACH TOWEL



JULY

BEACH TOYS



AUGUST

BACKPACK FILLED
WITH SCHOOL SUPPLIES



SEPTEMBER

BOOKS / EDUCATIONAL TOYS



OCTOBER

MITTENS & WINTER BOOTS



NOVEMBER

WINTER COATS & HATS



DECEMBER

HOLIDAY GIFTS



WOLVERINEHS.ORG/DONATE

LEAVE A LEGACY

The idea:

- Plan to, and honor the important people and memories in your life
- Sit down with WHS and a financial planner to outline your commitment
- Honor and keep giving for years to come

How the money is used:

The money is used to support scholarships, facility upgrades, opportunities for our children, or however you see fit.



MEMORIAL & TRIBUTES

Honor and celebrate people and events in your life by giving.



PLANNED GIVING

Provide a strategic gift with a retirement, estate, financial, or philanthropic plan.

THIS MICHIGAN HOCKEY SEASON, WOLVERINE HUMAN SERVICES IS PROUD TO SPONSOR ONE OF OUR FOSTER FAMILIES AS THEY TAKE A RIDE ON THE WHS ZAMBONI.



**TEXT "PARENT" TO 51555 TO BECOME
A FOSTER OR ADOPTIVE PARENT TODAY**





Wolverine Human Services

- Flint
- Taylor
- Warren
- Bloomfield Hills
- Detroit
- Saginaw
- Vassar

Core Orchards

- Detroit
- Saginaw

The DEN

- Detroit

Michigan Counseling Centers

- Bloomfield Hills
- Taylor

Fresh Era

- Detroit



DONOR RECOGNITION

A.O. Wood
Abby Conway
Adam Burgess
Adam Jerry
Agustina Fragner
Alicia Long
Amazon Smile
Amitoj Singh
Andi Mustafa
Andrew Ingebritson
Andy Roisman
Anna Mayer
Annet Schlosser
Answer Heating & Cooling
Arnold Weintraub
Autumn Lapcinski
B&B Maintenance Services
Belleville Area Garden Club
Beth Bica
Birmingham Rotary Club
Black Family Development
Blue Cross Blue Shield of Michigan
Blue Rock Technologies
Briana Burns
Brianna Meyer
Brittany Crutcher
Brittany Musko
Buzz Thomas
Carrie Barrett
Cathy Sullivan
Ceclia Savonen
Chad Cavanaugh
Charity Golf International
Charles Leporowski
Chris Holmes
Christina Gruber
Christina Marsee
Christine Ellery
Cindy Brabbs
City Contracting
Claire McCord
Claire Mueller
Clifford G. Samuels Jr.
Comerica Bank
Cook GMC Superstore

CORE Staff Support Services
Corestaff Support Services
Daly Merritt Insurance
Dan Lark
Dan Taylor
Dan Wiedmann
Dana Pingatore
David Hughes
David Katz
David Underdown
Deborah Edwards
Debra Burnett
Denise & Michael Tobin
Denise Anne Taylor
Derrick McCree
Diana Ori
Diane Johnston
Distinct Life
Dollar Bill Copying
Doreen Martin
Eddie & Maggie Perry
Eric Hans
Eric Velliky
Freddie Abiaad
George Pappas
Gilles Renard
Give With Liberty
Glenn Beckman
Grace Farr
Gregory Hoffman
Gretchen Guisbert
Growth Works, Inc.
Holly McWilliams
Hour Media
Human Service Associates
Impact 100 Detroit
Infinite Technologies
InSight Telepsychiatry
Interior Environments
Jaclyn VanEerden
James & Carol Furbush
James Fuller
James Iafrate
James Jarjosa

James Libs
Jason Medeiros
Jennifer Assaf
Jennifer Carlson
Jennifer Keller
Jennifer Wartella
Jerry Meter
Jessica Gartrell
Jessica Heyde
Joanne Case
Jodi Rodnick
Joe Daly
Joe Hasselblad
Jon Carlson
Jon Smalley
Jordan Morgan
Joseph Corey
Joseph Laurencelle
Judy Robinson
Julie Netzký
Justin Near
Karen & Brian Martensen
Kathleen Katz
Katie & Ty Morrison
Katie Solomon
Kevin Westfall
Kristy & Pat Sharrow
Krystin Kreschmer
Lamarsh Global
Larry DeFiore
Lauren Dinverno
Lauren Girson
Lawrence Cavanaugh
Lexi Judkins
Linda Liyab
Lora Boka
Lori Wisz
Lynsey Marchwinski
Mackenzie Smith
Mackenzie Sterr
Maher Financial Group
Mahle Industries
Manal Haddad
Marc & Lauren Ranke
Margaret McKinney
Marian Grout

Martin & Sons Properties
Marty Daly
Matt & Kelly Jambright
Matt Lucas
Matt Schommer
Matthew Bissett
Matthew Wolkhamer
Matthew Wollack
Maxine Mondshine
Michael & Karen Paciorek
Michael & Lori Smith
Michael Varghese
Michael Williams
Michelle Gregory
Michelle Heiliger
Michelle Snyder
Michigan Blood
Mike & Missy Cosby
Mike Shehadi
Misun Ebert
Muchmore, Harrington,
Smalley & Associates, LLC
Nate Lowery
Near Perfect Media
Network for Good
Newton-Johnson Plumbing & Heating
Nick Weise
Nicole D'Onofrio
Nicole Wheeler
Olivia Moore
Orchards Children's Services
Our Shepard Lutheran Church
Pamela Dymond
Patricia Lang
Patrick Grady
Patrick Higdon
Prime Office Technology
Pryor DeFiore CPA
Rachel Donovan
Ralph C. Wilson Foundation
Rania Haddad
Rebecca Lutz
Richard & Deborah Barney
Richard Palmer
Richard Shapack
Richard Williams
Rick Rothermel

Robert & Judith Wollack
Robert Farris
Robert Graham
Ron & Suzanne Geer
Ronald Warhurst
Ronnie Hamama
Ryan & Sarah Zengerle
Ryan Behringer
Ryan Derderian
Ryan Quinn
Sally & Scott O'Neal
Sarah Simmons
Secure Harbor Financial
Seth Helfman
Shane Marosi
Shiela Jones
Shirley Brown
Shirley Fischer
Sierra Station
Spectrum Human Services
St. George Church
Stacey Karson
Stefan Kudek
Stephanie Ebert
Stephanie Harmon
Steven Kashat
Steven McGuigan
Steven Reedy
Susan Eaton
Susanne Forbes
Susie Heineman
Tabetha Martel
Taylor Hines
The Collective Academy
The Marshall Mathers Foundation
The Salvage Group
The Young Family Foundation
Thomas & Lynn Marie Rogers
Thomas Melita
Tina Daniels
Tobias Kpadenou
Torrent Consulting
Trish Thane
United Jewish Foundation
University of Michigan
(School of Social Work)
USA Insulation

Vincent & Megan Brennan
Vincent & Megan Brennen
Virtue Cider
Warde Manuel
Wendy Pinter
William Tilton
Zachary Wollack

Thank you to all of our employee donors.

Adria Johnson-Dennis	Corzell Sykes	Katrina Harris	Reginald Williams
Aimee Johnson	Crystal Feska	Keith Jordan	Renisha Roulhac
Aja Burnett	David Clark	Kenton Gleason	Robert Cooper
Alexandra Fields	DeCarlos Parrish	Kevin Gordy	Robert Wollack
Alison Tracy-Gabriel	Deerris Johnson	Khadija Hicks	Royce Fanning
Amanda Winchester	DeMarcus Moore	Kiantay Winston	Ryan Esterline
Amari Sangster	Dennis Johnson	Kristi Einem-Smith	Samantha Parison
Ameena Curry	Derrick Robinson	Larry Patterson	Sandra DeMarais
Amy Miller	Derrick McCree	Lashawn Anderson	Shasta Mounger
Ann Phillips	Devia Boles	LaToya Burnside	Sheri Boyd
Anna Greenblatt	Diamonique Johnson	Laureen Brennan	Shiatoia Willis
Annet Schlosser	Dominique Beachum	Laurie Collins	Sonja Williams
Anthony Zidar	Doris Low	Letavia Young	Spencer Richardson-Moore
Antoinette Smith	Dulles Copedge	Lisa Brink	Stephen Baber
Audra Johnson	Eboni Jett	Louis Johnson Jr.	Sylvester Wilcox
Aurelio McQueen	Elaine Pecinis	Lynette Amos	Tacoya Miller
Autumn Blake	Elizabeth Paul	Lynne Yeck	Tameen Bobo
Barbara Clerebout	Equayvis Moten	Mahogany Hudson	Tavish Miree
Blake McGhee	Galen Martin	Marc Dietrich	Tena Murray
Bradley Gray	Gloria Harris	Mario Bradshaw	Terence Thompson
Brandy Curtis	Gregory McDonald	Mark Young	Terri Granger
Brian Walker	Gregory Hoffman	Mark Snow	Therese Rowell
Brittany Burt	Hailey Davis	Mark Howard	Thomas Krolicki
Bryana Walker	Jacob Strickland	Matthew Mallory	Timothy Andress
Calvin Henley	Jacqueline Branch	Matthew Wollack	Tommie Dowdley
Carol Furbush	Jada Jackson	Michael Townsend	Turquoise Rashid
Carole Belcher	Jamere Dixon	Michael Low	Tyler Sanders
Carolyn Johnson	James Washington	Michael Case	Victor Martin
Cassie West	James Furbush	Milton Butler	Victoria Benedict
Catrina Richter	Jamie Hill	Monique Jones-Rowland	Wayne Szagesh
Chelsee Senia	Jasmine Lockhart	Nakeyta Wallace	William White
Cherelle Dixon	Jasmine Range	Nathaniel Thomas	Yolanda Skelton
Chris Haines	Jeffrey Lee	Nicholas Frontera	Zondria Warren
Christina McGuffie	Jeniese Reed	Nicole Dumanois	
Cordarryl Thomas	John Levy	Niya Ford	
	Jordan Hearit-Hickey	Nolan Moore	
	Jovan Granberry	Olivia Taylor	
	Joyce Oliver	Patricia Harris	
	Judith Wollack	Paul Whitney	
	Justin Cochrane	Pedro Smith	
	Jynice Brown	Peter Wilson	
	Kaelin Felton	Philo Jones	
	Karen Ong	Rachel Joanisse	
	Kari LaPorte	Raetron Bryant	
	Katelyn Cichoski	Randall Miller	
	Kathleen Zendler	Reather Lloyd	



**RAISE A VICTOR BY FOSTERING OR ADOPTING
A CHILD WITH WOLVERINE HUMAN SERVICES.**

**FOR MORE INFORMATION:
TEXT "WOLVERINE" TO 51555**

WWW.WOLVERINEHS.ORG

FINANCIAL REPORT

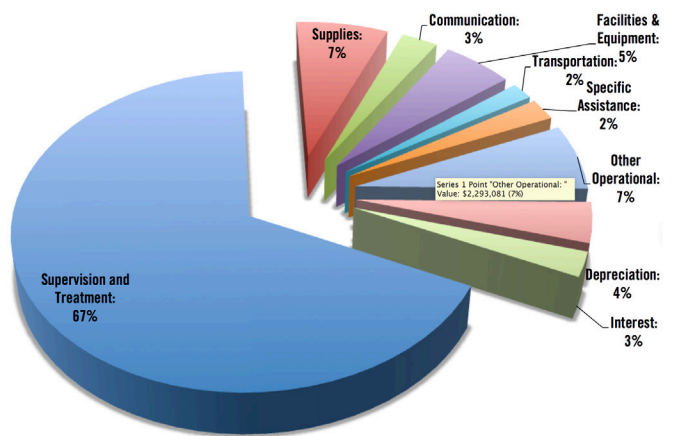
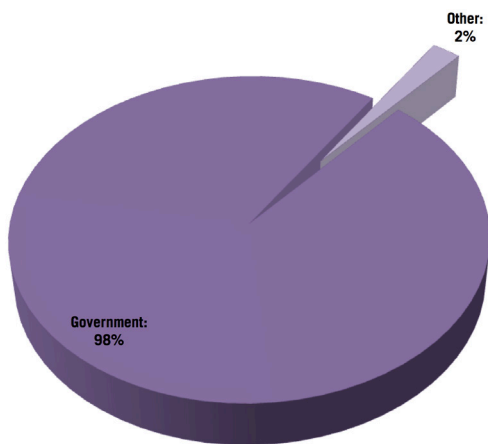
REVENUES

Government: \$33,846,608
Other: \$767,788
Total: \$34,614,396

EXPENSES

Supervision and Treatment: \$22,738,956
Supplies: \$2,391,555
Communication: \$946,106
Facilities & Equipment: \$1,836,201
Transportation: \$586,836
Specific Assistance: \$758,638
Other Operational: \$2,293,081
Depreciation: \$1,407,314
Interest: \$859,693
Total: \$33,818,380

Revenues Over Expenses: \$796,016



INTERESTED IN JOINING THE WOLVERINE HUMAN SERVICES TEAM?



**TEXT "JOBS" TO 51555 OR VISIT WOLVERINEHS.ORG/CAREERS
TO LEARN ABOUT EMPLOYMENT OPPORTUNITIES WITH WHS.**





WOLVERINEHS.ORG

