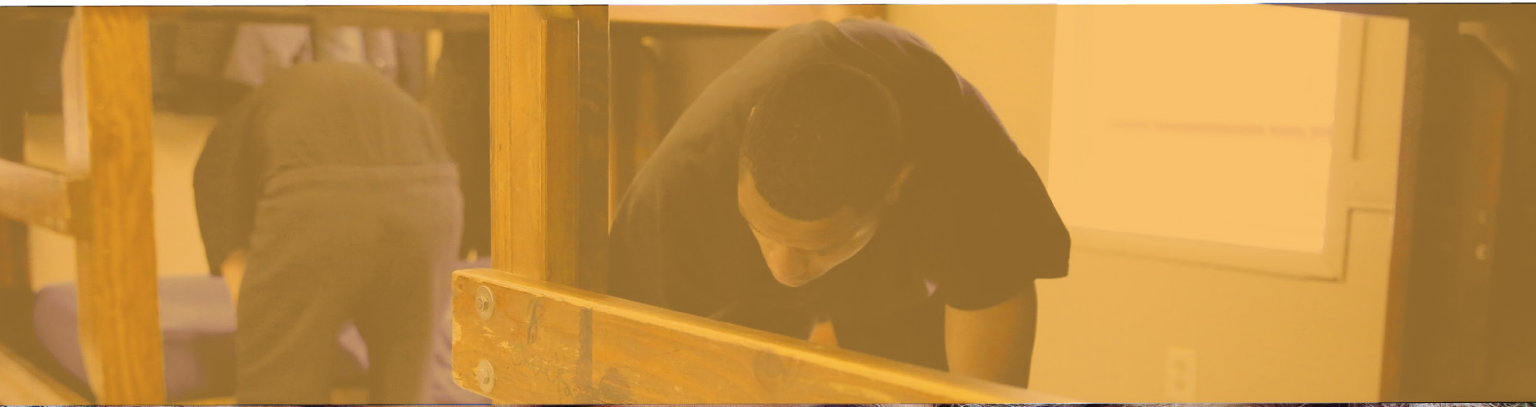


# THE WOLVERINE



# LETTER FROM THE CEO

Hello and Welcome to Wolverine Human Services!

Since 1987, Wolverine Human Services (WHS) has become the largest child welfare agency providing treatment services to children and families of Michigan. Our Founder, Robert E. Wollack, MSW, began WHS after working in a variety of settings. Through his research and experience, Robert developed a treatment model that he believed would provide the best possible outcomes. After opening the flagship program on February 4, 1987, St. Jude's Home for Boys, Wolverine Human Services has grown significantly and has developed a vast array of treatment programs.

We currently have 19 different Treatment Programs at six sites, and four foster care and adoption offices. Our Residential Treatment Programs include secure and non-secure facilities for both males and females in Residential Foster Care, the Juvenile Justice system, and those in need of treatment for Behavioral Health and Substance Abuse. Our Community Based Programs include Foster Care, Adoption, Independent Living, and Young Adult Voluntary Foster Care. We are a statewide agency having served children from all 83 counties in Michigan. We also now provide secured treatment to children from other states throughout the country.

We have achieved our success by being flexible and taking calculated risks. We have been asked over the years by the Department of Health and Human Services and counties to develop programs to meet the ever-changing and growing needs of your youth in crisis and we have been able to accomplish that.

Our latest challenge was to incorporate Evidence-Based Treatment Practices to meet the needs of youth who have experienced trauma and are diagnosed with Behavioral Health Disorders. Partnering with The Beck Institute for Cognitive Behavioral Therapy and Indiana University, we are finishing a five-year project, being the first residential agency to integrate the model into our treatment setting with fidelity and integrity. All staff, from cooks to therapists, are CBT competent in core skills to create a true CBT embedded residential program. This is the first of its kind and we aren't just saying we practice these skills, we are applying these skills every single day.

In the field of child welfare, things are always changing. At Wolverine Human Services, we want to be the model for the change that is to come. We are truly dedicated to our children and their families and are always striving to be the very best we can be. By dedicating ourselves to the needs of any child and any parent at any time, we truly are Helping Children to be Victors!

Judith Fischer Wollack, LMSW  
Chief Executive Officer, Wolverine Human Services







# TABLE OF CONTENTS

1	LETTER FROM CEO
3	TABLE OF CONTENTS
4	THE CBP TEAM
5	OUR OFFICES
6	SUCCESS DATA
7	FOSTER CARE
9	ADOPTION
12	THE PIGGY BANK PROJECT
13	INDEPENDENT LIVING
15	YOUNG ADULT VOLUNTARY FOSTER CARE
17	THE ALUMNI OPPORTUNITY
18	FEMALE SUCCESS STORY
19	MALE SUCCESS STORY
20	MICHIGAN COUNSELING CENTERS



# THE CBP TEAM



## OUR SERVICES

### FOSTER CARE

A system in which a minor has been placed into a private home of a state-certified caregiver.

### ADOPTION

A process whereby a person assumes the parenting of a child from that person's biological or legal parent or parents.

### INDEPENDENT LIVING

A system in which an adult provides a home and mentorship to a teen as they prepare for independence and adulthood.

### YOUNG ADULT VOLUNTARY FOSTER CARE

A voluntary system for individuals with an open foster care case or who exited foster care at/or after 18 years of age that supports youth in their transition to independence and adulthood.

# OUR OFFICES

Our Community Based Offices allow us to provide foster care and adoption services to children and families as well as provide training events to our employees, recipients of care, and the public.

These offices are state of the art and are easily accessed for all individuals. Located on the first floor, these barrier-free offices are easily accessible and inviting to all! Each office has ample parking, is located near public transportation, and is equipped with new client/child-friendly furniture and state of the art electronics including sound masking technology to assure confidentiality.

Taylor: 20300 Superior Rd #160, Taylor, MI 48180



Bloomfield Hills: 43902 Woodward Ave Suite #100, Bloomfield Hills, MI 48302



Flint: 1311 S. Linden Road, Unit D Flint, MI 48532



Warren: 14061 13 Mile Rd #1, Warren, MI 48093





# SUCCESS DATA

**692 CASES MANAGED THROUGHOUT MICHIGAN**

**291 CARE PROVIDER FAMILIES**

**127 ADOPTION CASES IN 11 COUNTRIES**

**187 DIFFERENT ADOPTION CASES**

**34 FINALIZED ADOPTIONS**

**140 FOSTER HOMES**

**164 FOSTER AND RELATIVE PARENTS**

**64 FOSTER CHILDREN FOUND PERMANENCY**

**4 INDEPENDENT LIVING/YOUNG ADULT VOLUNTARY FOSTER CARE CASES**

**3 COLLEGE STUDENTS**

**1 FULL-TIME EMPLOYED**



# FOSTER CARE

## **Program Mission**

Wolverine Human Services offers a statewide foster care program for children that have been removed from their parents' homes due to abuse or neglect. Children and their families are referred to Wolverine Human Services through a collaborative effort between the Michigan Court System, the Department of Health and Human Services, and Wolverine Human Services. Our role is to find and match stable families with children currently in Michigan's foster care system.

## **Children in the Foster Care System**

- Children's ages can range from birth to 17 years old
- Some children have no siblings, a few siblings, or several siblings
- Children often have physical or emotional issues

## **Requirements to Become a Foster Care Provider**

- Provide a loving and stable home to a child
- Applicants must be over the age of 18
- Single or married (if applicants are married, both spouses must apply)
- Willing to learn and adjust around the child's needs
- Financially able to meet the many needs of a child, as well as your own
- Able to show proof of income and expenditures
- Have an approved living situation (apartment, house, flat, mobile home, etc.)
- Participate and successfully complete all required training, paperwork, & functions/events

## **Process of Becoming A Wolverine Human Services Foster Parent**

- Complete foster parent orientation, PRIDE training, and CPR/First Aid Training
- Complete fingerprinting
- Criminal and protective services' clearances processed
- Agreement of agency policies
- Home assessment completed (to ensure a structurally safe and clean environment)

## **Benefits of Becoming A Wolverine Human Services Foster Parent**

- Able to choose sex, race, and characteristics of children placed in the home
- Be part of a supportive team to help foster children
- Training is given to facilitate successful placements
- Help and representation with community resources
- 24-hour emergency telephone social work access





# FOSTER CARE

## For More Information

### BLOOMFIELD HILLS



43902 Woodward Ave Suite #100,  
Bloomfield Hills, MI 48302  
248.724.2643

### TAYLOR



20300 Superior Rd #160, Taylor, MI  
48180  
734.284.6264

### WARREN



14061 13 Mile Rd #1, Warren, MI  
48093  
586.751.2802

### FLINT



1311 Linden Rd, Flint, MI 48532  
810.234.0489

**OR VISIT [WOLVERINEHS.ORG/SERVICES](http://WOLVERINEHS.ORG/SERVICES)**



# ADOPTION

## **Program Mission**

Forever families are needed for children for whom a family reunification is no longer an option. Wolverine Human Services will match eligible children to families who match each individual child's needs. Our goal is to ensure that all children achieve permanency in a stable and nurturing family environment.

## **Children Ready for Adoption**

- Children's ages can range from birth to 17 years old
- Most children range between 4 years and 12 years old
- Some children have no siblings, a few siblings, or several siblings
- Children often have physical or emotional issues

## **Requirements to Become an Adoptive Parent**

- Provide a loving and stable home to a child
- Applicants must be over the age of 18
- Single or married (if applicants are married, both spouses must apply)
- Open to accepting a child from any background
- Willing to learn and adjust around the child's needs
- Financially able to meet the many needs of a child, as well as your own
- Able to show proof of income and expenditures
- Have an approved living situation (apartment, house, flat, mobile home, etc.)
- Participate and successfully complete all required training, paperwork, & functions/events

## **Process of Becoming A Wolverine Human Services Adoptive Parent**

- Complete adoption orientation, PRIDE training, and CPR/First Aid Training
- Criminal and protective services' clearances processed
- Complete an adoption application
- Participate in home and family assessment
- Matches made with available children

## **Benefits of Becoming A Wolverine Human Services Adoptive Parent**

- Able to choose sex, race, and characteristics of children
- Do not have to be licensed foster parents
- Receive subsidy payments, if appropriate
- The child's background and behavioral patterns will be addressed through a child evaluation
- Post-adoption services are available
- Will be connected to other child adoptive programs





# ADOPTION

## For More Information

### BLOOMFIELD HILLS



43902 Woodward Ave Suite #100,  
Bloomfield Hills, MI 48302  
248.724.2643

### TAYLOR



20300 Superior Rd #160, Taylor, MI  
48180  
734.284.6264

### WARREN



14061 13 Mile Rd #1, Warren, MI  
48093  
586.751.2802

### FLINT

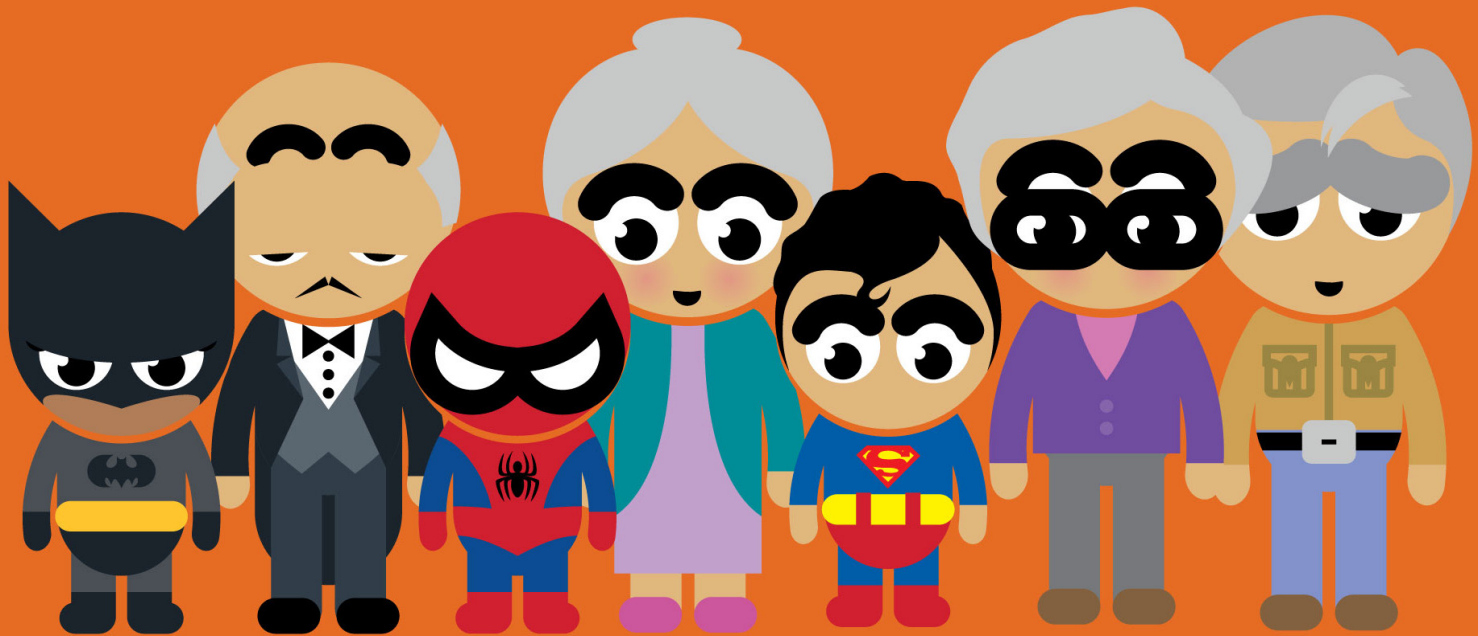


1311 Linden Rd, Flint, MI 48532  
810.234.0489

**OR VISIT [WOLVERINEHS.ORG/SERVICES](http://WOLVERINEHS.ORG/SERVICES)**

# ***DONATE TO THE PIGGY BANK PROJECT***

***RECEIVE A CAPE IN RETURN!***



***HELP WOLVERINE HUMAN SERVICES RAISE SUPERHEROES!***



# THE PIGGY BANK PROJECT

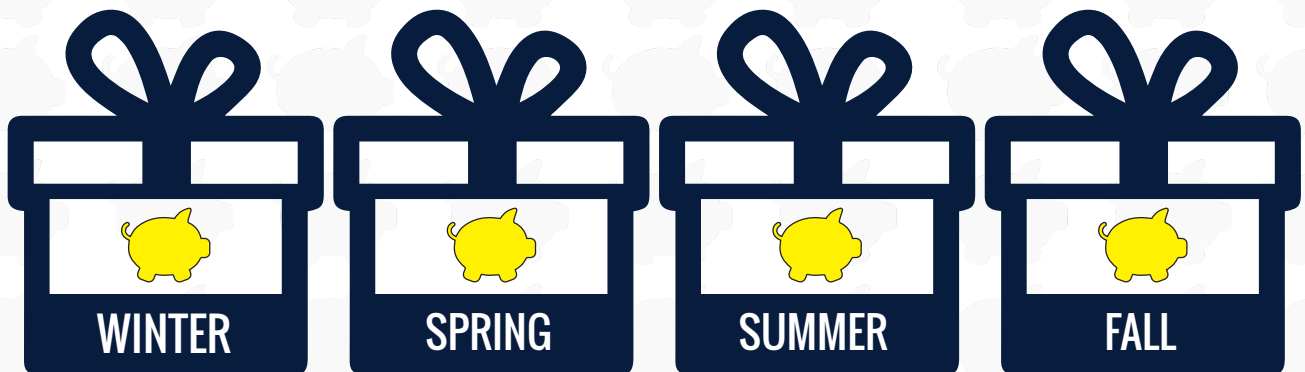


## THE IDEA:

- Use your piggy bank to collect donations
- Empty it once a month and write a check to Wolverine Human Services
- Teaches children how to save money while helping other children

## HOW THE MONEY IS USED:

4 times a year, Wolverine Human Services will send their foster children a package with items that they may not have access to otherwise.



IN HONOR OF THE GENEROUS DONATIONS RECEIVED, WOLVERINE HUMAN SERVICES FUNDS A YEARLY PIGGY BANK PICNIC FOR ALL FOSTER FAMILIES.

LEARN MORE ABOUT DONATION OPPORTUNITIES:  
[wolverinehs.org/donate](http://wolverinehs.org/donate)



# INDEPENDENT LIVING

## **Program Mission**

Our Independent Living Care Providers (IL) are individuals interested in working with older youth by providing guidance, support, and some independent living skills to our youth.

## **Children in Independent Living**

- Previous foster care clients ages range from 18 to 21 years old
- Clients enrolled in school full-time
- Clients working full-time
- Clients enrolled in school part-time and working part-time

## **Requirements to Become an IL Care Provider**

- Provide a loving and stable home
- Single or married (if applicants are married, both spouses must apply)
- Can be related to IL child (though not birth parents)
- Must be financially stable
- Able to produce proof of income and current utility bills
- Have an approved living situation (apartment, house, flat, mobile home, etc.)
- Have spare bedroom for IL child
- Provide necessary furniture, bedding, towels, cooking, and eating utensils
- Able to pass criminal and protective services' clearances
- Mail and telephone access for the child

## **Process of Becoming a Wolverine Human Services IL Care Provider**

- Criminal and protective services' clearances processed
- In-home orientation regarding program dynamics
- Explanation of what is expected under room and board payments
- Review of IL policies and IL provider expectations
- Home assessment completed (to ensure a structurally safe and clean environment)

## **Benefits of Becoming a Wolverine Human Services IL Care Provider**

- Able to choose sex, race, and characteristics of children placed in the home
- Do not have to be licensed foster parents
- Receive a daily room and board rate which is paid biweekly by the child
- Prior to placement into an IL home, the youth's background and behavioral patterns will be discussed
- Satisfaction of helping a youth become independent and self-reliant
- Youth's financial needs are supplemented through state payments



# INDEPENDENT LIVING

Training is given to facilitate a successful placement  
The child will be monitored for program and home compliance 24-hour telephone social work access

## For More Information

### BLOOMFIELD HILLS



43902 Woodward Ave Suite #100,  
Bloomfield Hills, MI 48302  
248.724.2643

### TAYLOR



20300 Superior Rd #160, Taylor, MI  
48180  
734.284.6264

### WARREN



14061 13 Mile Rd #1, Warren, MI  
48093  
586.751.2802

### FLINT



1311 Linden Rd, Flint, MI 48532  
810.234.0489

**OR VISIT [WOLVERINEHS.ORG/SERVICES](http://WOLVERINEHS.ORG/SERVICES)**





# YOUNG ADULT VOLUNTARY FOSTER CARE

## **Program Mission**

The Young Adult Voluntary Foster Care Program (YAVFC) is designed to meet the needs of youth from the ages of 18-20 years old with an open foster care case or youth who exited foster care at/or after 18 years of age. The program is designed to support the youth in their transition to independence and adulthood. The youth, case manager, other professionals, and any individual identified as significant to the youth function as a team. The team will focus on the individual goals of the youth to meet their needs.

## **Young Adults in Voluntary Foster Care**

- Must be between 18-20 years of age
- Have an open foster care case or have exited foster care at or after 18 years of age
- Be referred by the Department of Health and Human Services (DHHS) or from private agencies with the approval of DHHS
- Complete an application form and questionnaire
- Sign a contract agreeing to abide by the program policy and expectations
- Have or agree to a living arrangement that is safe and secure, according to agency standards

## **Process of Becoming A Young Adult Voluntary Foster Care (YAVFC) Client**

- Be referred from DHHS or from private agencies with the approval of DHHS
- A referral packet is received
- The client completes a YAVFC application and questionnaire
- Client is interviewed for eligibility
- The client signs a contract agreeing to abide by the program policy

## **Benefits of Being A Young Adult Voluntary Foster Care (YAVFC) Client**

- Criminal and protective services' clearances processed
- In home orientation regarding program dynamics
- Explanation of what is expected under room and board payments
- Review of IL policies and IL provider expectations
- Home assessment completed (to ensure a structurally safe and clean environment)

## **Benefits of Becoming A Wolverine Human Services Care Provider**

- Have a supportive team to help and guide client through transition to independence
- Be provided with updated information and referrals to available services
- Receive independent living stipend
- Assist client in locating community resources to address employment, education and medical needs
- Access to 24-hour emergency assistance
- Ability to terminate services when ready to do so



# YOUNG ADULT VOLUNTARY FOSTER CARE

## For More Information

### BLOOMFIELD HILLS



43902 Woodward Ave Suite #100,  
Bloomfield Hills, MI 48302  
248.724.2643

### TAYLOR



20300 Superior Rd #160, Taylor, MI  
48180  
734.284.6264

### WARREN



14061 13 Mile Rd #1, Warren, MI  
48093  
586.751.2802

### FLINT



1311 Linden Rd, Flint, MI 48532  
810.234.0489

**OR VISIT [WOLVERINEHS.ORG/SERVICES](http://WOLVERINEHS.ORG/SERVICES)**

# THE ALUMNI OPPORTUNITY

## The idea:

- Work with your business or family to support a child
- Make an annual donation to support or develop a scholarship
- Provide an opportunity for our alumni to continue their success in education and career

## How the money is used:

Each year, WHS provides multiple scholarships to clients and their families who have successfully graduated from a treatment program or participated in one of our Community Based Programs.



### THE WAYNE ANDERSON AWARD

This award is given to a WHS alumnus who has overcome many serious difficulties. In spite of these challenges, each award winner remained focused on his or her personal growth and maturation with the help of agency programs and our dedicated staff.



### THE VICTORS AWARD

This award is presented to the WHS alumnus who experiences the most growth and general expansion of perspective through involvement in extra-curricular activities while in WHS programs, as these activities are recognized as an avenue for growth and self-discipline in our young clients.



### WILLIAM L. TILTAN SCHOLARSHIP

This award is presented to a WHS alumnus who shows the most progress in higher education pursuits.



### YOUNG FAMILY FOUNDATION SCHOLARSHIP

This award is given to a Wolverine client who demonstrates a continued desire and ability to be successful in their community to assist in the pursuit of a career through vocational or trade school.



### CREATE YOUR OWN AWARD OR SCHOLARSHIP

Create an award or scholarship of your choosing for a WHS alumnus.



# ALEXIS LENDERMAN

Alexis Lenderman started her journey in the Wolverine Human Services Foster Care program at the age of 13. With many family struggles and losing her mother at a young age, Alexis started working with Wolverine Human Services when she was placed with family in Rochester Hills. “It was really difficult adjusting to life with different family members especially because it was not my first choice and it was not a good placement in my eyes.” Despite not being happy with her placement and finding the transition difficult, Alexis was grateful to be in a good school district and these difficulties taught her to advocate for herself.

At the age of 17, Alexis was kicked out of her family placement and spent a year living with another foster family. “Again, these transitions were really hard to manage and it made it difficult to grow and move forward”. After aging out of foster care, Alexis entered the Independent Living program. “I would recommend the Independent Living program and Young Adult Voluntary Foster Care to everyone aging out of foster care. It really helps with the transition of living on your own. After you leave foster care, you are just cut off and left without support. Most young adults continue to get assistance from their parents or family members for a few years after high school. This program does a great job of giving this support to former foster children. Whether you are continuing your education or just starting off in the workforce, I would recommend this program to everyone.”

Alexis continues to be thankful to Wolverine Human Services for all of the support staff gave her throughout the years. While in our care, she still says the best life skill she developed was her ability to advocate for herself. “I developed this pretty early to the point where I didn’t realize this was not a survival skill everyone had.”

Today, Alexis continues to be a huge human rights and foster care advocate. “I was chosen by my University President as a Newman Civic Fellow. Then, I participated in the Leadership and the American Presidency program in Washington, DC for a semester interning at the Congressional Coalition on Adoption.” On campus, Alexis advocates for students and this summer she will be going to the UN Headquarters Global Institute for Human Rights. Alexis is preparing to graduate and hopes to someday attend Georgetown to earn a Master’s in Foreign Science.

“My goal in life is to either work abroad in international development or work for an international organization.” If Alexis could give advice to other foster children currently in our care, “I would say one of the most important things we can do in life is invest in ourselves. Find a mentor who has a skill that you want to acquire or someone that you look up to. They can help guide you through life and having someone to look out for you that you feel comfortable with is incredibly crucial.”



# DERRICK KIRK

Derrick Kirk started his journey through our Community Based Programs at the age of 8. Before coming to Detroit, Derrick rarely left his neighborhood. Coming into our care was the first time he experienced diversity. He struggled because at that age “I had no idea what was going on, I would go to court not knowing what was going on, I would ride in the car with my worker not knowing what was going on. I felt like no one knew how to tell me what was happening.”

Though his journey was difficult, Derrick has many fond memories of Wolverine Human Services and the workers he encountered. “One of my old workers really used to try hard to be cool and relate to me. Just to get me out of the house to meet people, she would pick me up and take me to the mall. She would always try to get me to talk to other people or girls. At the time, I was awkward but looking back it really built my confidence.” In later years, Wolverine Human Services helped Derrick attend Prom- twice - and assisted him in getting a rental vehicle.

Since then, Derrick has gone on to obtain a higher education degree, climb the corporate ladder at a thriving real estate firm, as well as build, develop, and sell a lucrative business. Now, he is a motivational speaker and business consultant. Derrick travels a lot but loves speaking and helping others.

In the future, Derrick hopes to spend more time rebuilding Detroit and giving back to the people who got him where he is. Currently, he is working on putting together a foundation that donates school supplies to kindergarten classrooms and he hopes to reconnect with Wolverine Human Services through a non-profit he works with called Ask the Messengers to bring more awareness to lives affected by substance abuse.



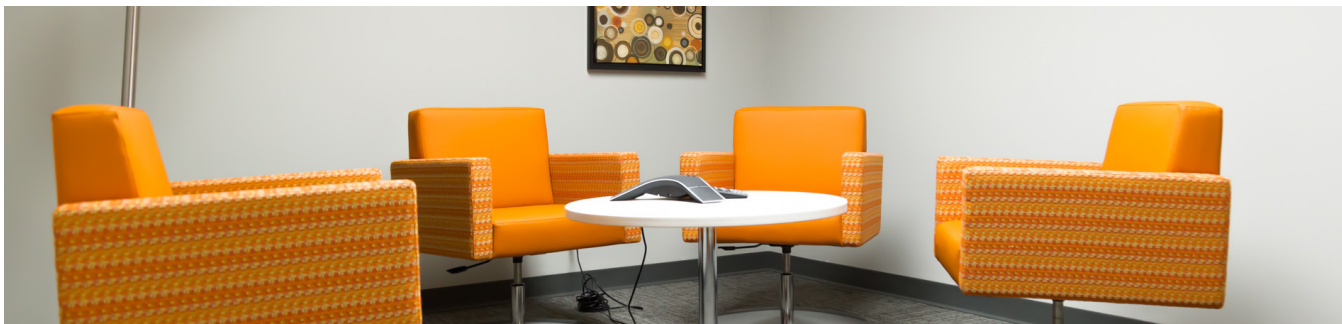


## PROVIDING THE COMMUNITY WITH THE GUIDANCE AND SUPPORT NEEDED TO HELP RESOLVE ISSUES WITH LIFE, RELATIONSHIPS, AND FAMILY

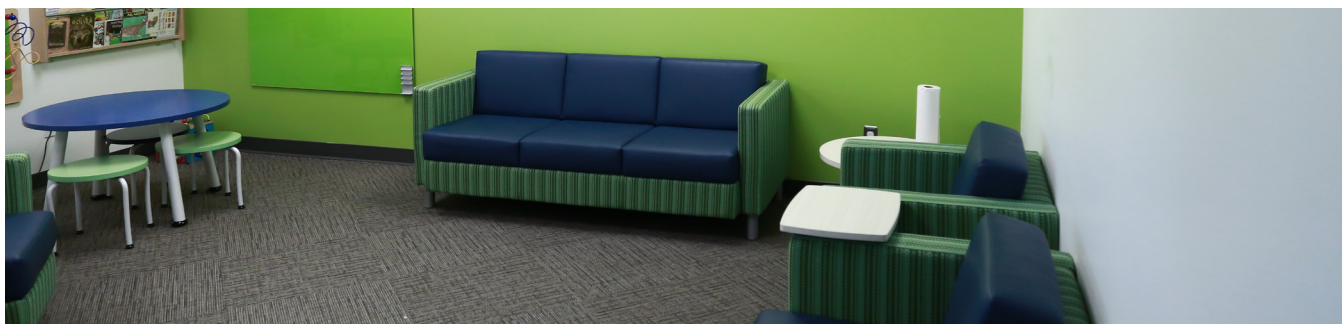
Michigan Counseling Centers provides outpatient counseling services to groups and individuals of all ages in Southeast, Michigan. These services include:

- Mental Health Services for Children, Teens, Adults, Couples, and Families
- Psychotherapy
- Assessments & Referrals

Bloomfield Hills: Woodward, Suite #100 Bloomfield Hills, MI 48302



Taylor: 20300 Superior Road, Suite #160 Taylor, MI 48180







WOLVERINEHS.ORG