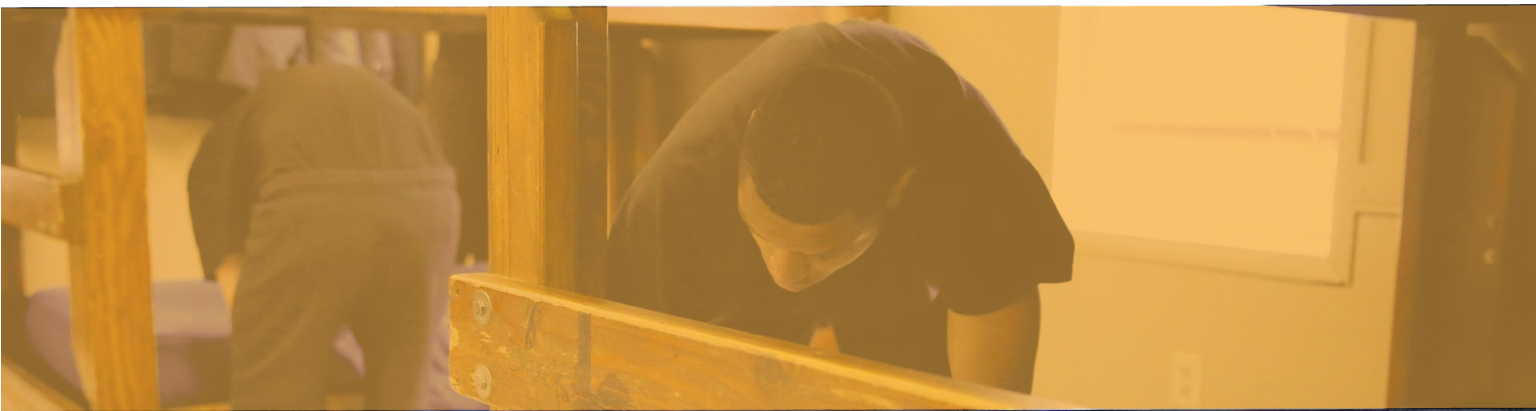


# THE WOLVERINE



## ANNUAL REPORT

# LETTER FROM THE CEO

Hello and Welcome to Wolverine Human Services!

Since 1987, Wolverine Human Services (WHS) has become the largest child welfare agency providing treatment services to children and families of Michigan. Our Founder, Robert E. Wollack, MSW, began WHS after working in a variety of settings. Through his research and experience, Robert developed a treatment model that he believed would provide the best possible outcomes. After opening the flagship program on February 4, 1987, St. Jude's Home for Boys, Wolverine Human Services has grown significantly and has developed a vast array of treatment programs.

We currently have 19 different Treatment Programs at six sites, and four foster care and adoption offices. Our Residential Treatment Programs include secure and non-secure facilities for both males and females in Residential Foster Care, the Juvenile Justice system, and those in need of treatment for Behavioral Health and Substance Abuse. Our Community Based Programs include Foster Care, Adoption, Independent Living, and Young Adult Voluntary Foster Care. We are a statewide agency having served children from all 83 counties in Michigan. We also now provide secured treatment to children from other states throughout the country.

We have achieved our success by being flexible and taking calculated risks. We have been asked over the years by the Department of Health and Human Services and counties to develop programs to meet the ever-changing and growing needs of your youth in crisis and we have been able to accomplish that.

Our latest challenge was to incorporate Evidence-Based Treatment Practices to meet the needs of youth who have experienced trauma and are diagnosed with Behavioral Health Disorders. Partnering with The Beck Institute for Cognitive Behavioral Therapy and Indiana University, we are finishing a five-year project, being the first residential agency to integrate the model into our treatment setting with fidelity and integrity. All staff, from cooks to therapists, are CBT competent in core skills to create a true CBT embedded residential program. This is the first of its kind and we aren't just saying we practice these skills, we are applying these skills every single day.

In the field of child welfare, things are always changing. At Wolverine Human Services, we want to be the model for the change that is to come. We are truly dedicated to our children and their families and are always striving to be the very best we can be. By dedicating ourselves to the needs of any child and any parent at any time, we truly are Helping Children to be Victors!

Judith Fischer Wollack, LMSW  
Chief Executive Officer, Wolverine Human Services







# TABLE OF CONTENTS

1	LETTER FROM CEO
3	TABLE OF CONTENTS
4	OUR MISSION
5	JOIN OUR TEAM
6	EXECUTIVE TEAM
7	BOARD OF TRUSTEES
8	LETTER FROM BOARD OF TRUSTEES
9	OUR SERVICES
11	OUR LOCATIONS
12	OUR FACILITIES
13	RESIDENTIAL TREATMENT
14	RESIDENTIAL SUCCESS DATA
15	COMMUNITY BASED PROGRAMS
16	CBP SUCCESS DATA
17	STAFF ACCOMPLISHMENTS
18	OUR BRANDS
19	CORE ORCHARDS
20	MICHIGAN COUNSELING CENTERS
21	FRESH ERA
22	VOLUNTEER
24	EVENTS
27	THE ALUMNI OPPORTUNITY
28	THE PIGGY BANK PROJECT
29	LEAVE A LEGACY
31	DONOR RECOGNITION
33	EMPLOYEE DONOR RECOGNITION
35	FINANCIAL REPORT



# OUR MISSION

At Wolverine Human Services, our mission is Helping Children to be Victors.

## ABOUT US

Wolverine Human Services is the largest child welfare agency providing the full continuum of care to children in Michigan. WHS offers both Residential Treatment and Community Based Programs to children and families in all 83 counties of the state. Residential Treatment includes programs in Behavioral Health, Substance Abuse, Juvenile Justice, and Residential Foster Care. Community Based Programs include Foster Care, Adoption, Independent Living, and Young Adult Voluntary Foster Care. WHS also supports the community through a weekly food distribution program and a soup kitchen open on the weekends.

To further engage with the community, Wolverine Human Services has developed 3 other organizations throughout the state: Core Orchards, Michigan Counseling Centers, and Fresh Era. Core Orchards seeks to provide access to education and nutrition through community apple orchards. Michigan Counseling Centers provides out-patient counseling services to anyone in need of support and treatment, specifically past clients and their families. Fresh Era is a group of young professionals networking and volunteering in Detroit and its neighboring areas.

Over the years, as we continue to expand our services and programs, our mission remains the same—Helping Children to be Victors.





# BE THE SOLUTION, JOIN OUR TEAM



**TEXT "JOBS" TO 51555 OR VISIT [WOLVERINEHS.ORG/CAREERS](https://wolverinehs.org/careers)  
TO LEARN ABOUT EMPLOYMENT OPPORTUNITIES WITH WHS.**





# EXECUTIVE TEAM



## ***THE EXECUTIVE TEAM***

*Robert E. Wollack, President*

*Judith Fischer Wollack, Chief Executive Officer*

*Derrick McCree, Senior Vice President*

*Chris Holmes, Chief Financial Officer*

*Lisa Brink, Vice President of Business*

*Matthew Wollack, Vice President of Strategic Development*

*Thomas Krolicki, Vice President of Community Based Programs and Chief Operating Office of Michigan Counseling Centers*

*Annet M. Schlosser, Vice President of Human Resources*

# BOARD OF TRUSTEES



## **THE BOARD OF TRUSTEES**

*Karen Paciorek, Ph.D., Chair, Eastern Michigan University*

*Ronald Warhurst, First Vice-Chairman*

*Warde Manuel, Trustee, University of Michigan*

*Vincent J. Brennan, Trustee, Denali Energy*

*Ritchie Piert, Trustee, Marjin Group*

*Martin F. Daly, Trustee, Daly Merritt, Inc.*

*Thomas Rogers, Trustee*

*James Libs, Secretary, Brown & Brown of Detroit*

*Gerard Meter, Treasurer, Steelcase, Inc.*

*John Wangler, Trustee, TopCat Sales*

*Robert E. Wollack, Second Vice-Chairman, Wolverine Human Services*

*Jordan Morgan, Trustee, The Jordan Morgan Foundation*

*Brittany Young, Trustee, Plastipak Packaging*

*Jonathan Minder, Trustee, Maximus Ventures*

*Adam R. Burgess, Trustee, Plante Moran Cresa*



# LETTER FROM BOARD OF TRUSTEES

Wolverine Human Services has consistently been a leader in the State of Michigan in serving at-risk youth and families for 32 years. Nationally, Wolverine Human Services is gaining attention for the innovative work done to serve young people and families in our state. Our 15 board members are committed to supporting the outstanding work the members of the WHS family of dedicated professionals carry out each and every day. Over the years, WHS has grown and created new outreach services and partnerships all while consistently providing quality, compassionate care that stays true to the core values and guiding principles of WHS. We support WHS and continue to seek opportunities to celebrate many stories of hope and success.

Today, more than ever, vulnerable youth and families in Michigan need programs and services to support them on their path to success. Whether it comes in the form of advocacy, legislation, case management, community outreach or direct counseling, the data show that Wolverine makes a significant difference in the lives of so many. More than statistics, our success stories are the many personal tributes that may go unnoticed in public through our day to day work. But those successes never go unnoticed to our clients, families, and staff. We celebrate every victory, large and small.

Wolverine Human Services has our appreciation and gratitude for making a positive difference for so many who need our support.

Together we are Helping Children to be Victors!

Karen Menke Paciorek, Ph.D.  
Chair, Wolverine Human Services Board of Trustees

# OUR SERVICES



## FOSTER CARE AND ADOPTION



**FAMILY  
REUNIFICATION**



**INDEPENDENT  
LIVING**



**YOUNG ADULT  
VOLUNTARY  
FOSTER CARE**

## BEHAVIORAL HEALTH, SUBSTANCE ABUSE, JUVENILE JUSTICE & RESIDENTIAL FOSTER CARE



**EMERGENCY  
SHELTER**



**SECURE  
TREATMENT**



**NON-SECURE  
TREATMENT**



**SHORT-TERM  
SHELTER AND  
PLACEMENT**





**ANY CHILD,  
ANY PARENT,  
ANY TIME**



**FOSTER OR ADOPT WITH WOLVERINE HUMAN SERVICES TEXT "PRIDE" TO 51555  
FOR MORE INFORMATION OR VISIT [WOLVERINEHS.ORG/SERVICES](http://WOLVERINEHS.ORG/SERVICES)**



Wolverine Human Services

- Flint
- Taylor
- Warren
- Bloomfield Hills
- Detroit
- Saginaw
- Vassar

Core Orchards

- Detroit
- Saginaw

Michigan Counseling Centers

- Bloomfield Hills
- Taylor

Fresh Era

- Detroit





# OUR FACILITIES

At Wolverine Human Services, we are committed to creating and maintaining modern, therapeutic environments for our children and our employees. In what may be a very uncertain and tumultuous time for our children, we seek to provide them with safety and security throughout our facilities.

In our Residential Facilities, we have researched the most durable, yet comfortable materials when it comes to walls, flooring, paint color, and window placement.

DETROIT



VASSAR

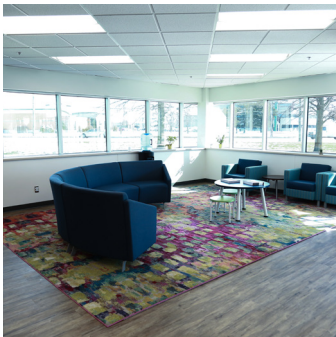


SAGINAW



In our Community Based Programs' offices, we have developed spaces for our foster care and adoptive families that are bright, comfortable, and modern for our children. Our offices are equipped with smart televisions in the waiting rooms and our visitation rooms are warm and comforting.

FLINT



TAYLOR



BLOOMFIELD HILLS



WARREN



As the needs of our children continue to change, we are committed to continuously evolving our facilities and offices so that they are as safe, modern, and therapeutic as possible for the children that we serve.

**TO LEARN MORE ABOUT OUR OFFICES, CHECK OUT OUR FACILITIES MAGAZINE**

# RESIDENTIAL TREATMENT

Wolverine Human Services' programs focus on adolescents suffering from the social injustices of abuse and neglect and those involved in delinquent activities. Our residential treatment programs are anchored on a set of tried and true principles to help the health and wellbeing of these adolescents.

## Behavioral Health Treatment

- Foundations - Males 12-17 - Vassar, MI - Non-Secure
- Passages - Females 12-17 - Vassar, MI - Non-Secure
- Social & Behavioral Learning Center - Males 12-17 - Saginaw, MI - Secure
- Endeavors - Females 12-17 - Saginaw, MI - Secure

## Substance Abuse Treatment

- Victor's Substance Abuse Treatment Center - Males 12-17 - Detroit, MI - Non-Secure
- Wolverine Center for Addiction Recovery & Education Intensive (B) - Males 12-17 - Vassar, MI - Non-Secure
- Wolverine Center for Addiction Recovery & Education Intensive (G) - Females 12-17 - Vassar, MI - Non-Secure
- Wolverine Center for Addiction Recovery & Education R - Males 12-17 - Vassar, MI - Non-Secure
- Wolverine Growth & Recovery Center Vassar Shelter - Males 12-17 - Vassar, MI - Non-Secure
- Wolverine Center for Addiction Recovery & Education - Males 12-17 - Saginaw, MI - Secure

## Juvenile Justice

- Victor's Center PPN - Males 12-17 - Detroit, MI - Non-Secure
- Phoenix Sexual Offender Treatment - Males 12-17 - Vassar, MI - Non-Secure
- Journeys - Females 12-17 - Vassar, MI - Non-Secure
- Wolverine Sexual Aggression Recovery Program - Males 12-17 - Saginaw, MI - Secure

## Residential Foster Care

- St Jude's - Males 12-17 - Detroit, MI - Non-Secure
- Detroit Shelter - Males 6-17 - Detroit, MI - Non-Secure
- Victor's Center Residential Foster Care - Males 12-17 - Detroit, MI - Non-Secure
- WGRC Residential Foster Care - Males 12-17 - Vassar, MI - Non-Secure
- Wolverine Intensive Assessment Unit - Males 12-17 - Vassar, MI - Non-Secure



TO LEARN MORE ABOUT OUR TREATMENT PROGRAMS, CHECK OUT OUR RESIDENTIAL TREATMENT MAGAZINE



# SUCCESS DATA

**123** CLIENTS RECEIVED PSYCHOLOGICAL EVALUATIONS

**721** CLIENTS RECEIVED DENTAL CARE

**553** CLIENTS RECEIVED OPHTHALMOLOGICAL CARE

**264** GLASSES WERE RECEIVED BY CLIENTS

**30** HIGH SCHOOL GRADUATIONS

**18** GED GRADUATIONS

**14** COLLEGE ENROLLMENTS

RESTRAINTS DECREASED BY **28%**

**81%** OF OUR CLIENTS DID NOT REQUIRE ANY PHYSICAL INTERVENTIONS

THE FAMILY SATISFACTION SCORE INCREASED TO A **4.03/5.00**

OUR SUCCESS RATE ROSE FROM **80% TO 90%**

# COMMUNITY BASED PROGRAMS

## OUR SERVICES

**Foster Care:** A system in which a minor has been placed into a private home of a state-certified caregiver.

**Adoption:** A process whereby a person assumes the parenting of a child from that person's biological or legal parent or parents.

**Teen Support Services:** A system in which an adult provides a home and mentorship to a teen as they prepare for independence and adulthood.

**Young Adult Voluntary Foster Care:** A voluntary system for individuals with an open foster care case or who exited foster care at/or after 18 years of age that supports youth in their transition to independence and adulthood.



### BLOOMFIELD HILLS



43902 Woodward Ave Suite #100,  
Bloomfield Hills, MI 48302  
248.724.2643

### TAYLOR



20300 Superior Rd #160, Taylor, MI  
48180  
734.284.6264

### WARREN



14061 13 Mile Rd #1, Warren, MI  
48093  
586.751.2802

### FLINT



1311 Linden Rd, Flint, MI 48532  
810.234.0489

FOR MORE INFORMATION ABOUT THESE PROGRAMS, CHECK OUT OUR COMMUNITY BASED PROGRAMS MAGAZINE



# CBP SUCCESS DATA

**692 CASES MANAGED THROUGHOUT MICHIGAN**

**291 CARE PROVIDER FAMILIES**

**127 ADOPTION CASES IN 11 COUNTRIES**

**187 DIFFERENT ADOPTION CASES**

**34 FINALIZED ADOPTIONS**

**140 FOSTER HOMES**

**164 FOSTER AND RELATIVE PARENTS**

**64 FOSTER CHILDREN FOUND PERMANENCY**

**4 INDEPENDENT LIVING/YOUNG ADULT VOLUNTARY FOSTER CARE CASES**

**3 COLLEGE STUDENTS**

**1 FULL-TIME EMPLOYED**

# STAFF ACCOMPLISHMENTS

**317 STAFF ENDORSED IN LEVEL 1 COGNITIVE BEHAVIORAL THERAPY**

**377 STAFF CERTIFIED IN CPR**

**75 STAFF CERTIFIED IN YOUTH MENTAL HEALTH FIRST AID**

**2 STAFF CERTIFIED IN APPLIED SUICIDE INTERVENTION SKILLS TRAINING**

**1 STAFF EARNED THEIR CAADC**

**1 STAFF EARNED THEIR CADC**

**1 STAFF EARNED THEIR LMSW**





# Wolverine

Human Services

*Helping Children to be Victors*

***COMMUNITY  
APPLE ORCHARDS***



***OUTPATIENT  
COUNSELING SERVICES***



***YOUNG PROFESSIONALS  
GROUP***

**FRESH ERA**

# CORE ORCHARDS

**What is your mission?**

The mission of Core Orchards is to plant the seed to empower children and communities through education, partnership, and caring.

**What type of population do you serve and why?**

We serve both the clients of Wolverine and our local communities. We believe the whole health of a child and family is core to success, and that includes understanding and access to proper nutrition.

**Where are you located?**

We are located in Detroit and Buena Vista.

**What was a major milestone this year?**

A major milestone this year was planting an apple orchard with over 300 apple trees in Detroit with the support of more than 100 employees of Bingham Farms-based Paragon Properties LLC.

**What was an obstacle you overcame this year?**

An obstacle we overcame this year was working with the City of Detroit's Urban Agriculture Ordinance to plant the first orchard with more than 9 fruit-bearing trees.

**What does the future hold for Core Orchards?**

This spring, Core Orchards will be planting 50 non-fruit bearing trees through the DTE Energy Foundations Tree Planting Grant Program adding to the diversity of our Core Orchards Detroit project. Additionally, in both our north and south locations, we will be adding honey bee hives to our orchards.





# MICHIGAN COUNSELING CENTERS

**What is your mission?**

Our mission is to provide the community with the guidance and support needed to help resolve issues with life, relationships, and family.

**What type of population do you serve and why?**

We serve anyone in the community in need of outpatient counseling. Specifically, we focus on current families and past clients that need additional support and treatment.

**Where are you located?**

MCC is currently offering services in Bloomfield Hills and Taylor.

**What was a major milestone this year?**

A major milestone this year was opening up two office locations to serve the community.

**What was an obstacle that you overcame this year?**

An obstacle we overcame this year was working with insurance providers to offer as many coverage options as possible to our clients.

**What does the future hold for Michigan Counseling Centers?**

The future holds additional locations in Flint and Warren.



# FRESH ERA

**What is your mission?**

Our mission is to provide opportunities for young Metro-Detroiters to participate in the social and economic renaissance of the city.

**What type of population do you serve and why?**

We serve the needs of Wolverine's clients, as well as other local non-profits participating in the revitalization of the Detroit community. Wolverine Human Services has been an active community member in Detroit for over 30 years, and we believe it is critical to continue supporting the city where we started.

**Where are you located?**

We are located on Detroit's Eastside in the Jefferson Mack Community, as a part of the Wolverine Human Services' campus. Additionally, we participate in activities throughout Southeast Michigan.

**What was a major milestone this year?**

A major milestone this year was hosting and participating in a board retreat that not only acclimated our new board members, but it set the vision and direction for the rest of the year.

**What was an obstacle that you overcame this year?**

An obstacle we overcame this year was detailing what exactly is included in the membership benefits, as well as updating the website to reflect the direction we decided at the retreat.

**What does the future hold for Fresh Era?**

The future holds immense possibilities for Fresh Era. With the new calendar year came a fresh start for this organization. We now know exactly what to do for our members, including hosting 6 volunteer opportunities and 6 networking events throughout the year.

# FRESH ERA

**FRESHERA.ORG**

# VOLUNTEER

Wolverine Human Services, Core Orchards, and Fresh Era all have amazing volunteer opportunities open to everyone looking to serve our community.

## WOLVERINE HUMAN SERVICES

### MONDAY FOOD DISTRIBUTION



WHS has partnered with Forgotten Harvest to aid in the fight against hunger. Every Monday, 75 Harvest Boxes are prepared and distributed by volunteers to community members in need.

### SATURDAY COMMUNITY DINNER



Every Saturday, local residents can spend their afternoons in the newly-renovated, commercial kitchen at the JVCC to receive a hot meal. Volunteers assist in meal preparation and community engagement with our wonderful neighbors.

### MENTORING WHS YOUTH



WHS mentors live our mission of Helping Children to be Victors. The most successful of mentors share characteristics of patience, empathy, and reliability, which all help to foster positive relationships, in order to carry out the mission.



## COMMUNITY ENRICHMENT PROJECTS



Whether we are tending to our hoop house gardens or planting another round of trees, Core Orchard volunteers spend the day getting down in the dirt! From community clean-up to vegetable harvesting, they do it all.

## YOUNG PROFESSIONALS BOARD



Fresh Era provides opportunities for young Metro-Detroiters to participate in the social and economic renaissance of the city through group volunteer events. Meet new friends, rebuild your community, and make a difference.

# EVENTS

## AWARDS & SCHOLARSHIP BANQUET



Every year, Wolverine Human Services celebrates the graduated victors of our programs as well as community members making a difference by giving out annual scholarships and awards.

**COMING AGAIN APRIL 26TH 2019**

## ARBOR DAY CELEBRATION



Core Orchards holds a 2-year long tradition of planting trees on Arbor Day. This past year, we planted over 300 apple trees in Detroit city limits and next year we plan to plant another 50 non-fruit bearing trees.

**COMING AGAIN MAY 3RD 2019**



# PIGGY BANK PICNIC



Wolverine Human Services is eternally grateful to the Foster Care providers who support our Community Based Programs department. We show our gratitude by holding a Piggy Bank Picnic each year to bring this amazing family-orientated

**COMING AGAIN THIS SUMMER**

# DETROITERS CELEBRITY FOWLING TOURNAMENT



Last year, Wolverine Human Services and Comedy Central's Detroiters partnered up to host a Celebrity Fowling Tournament in downtown Detroit with over \$10,000 being donated back to our Piggy Bank Project.

# LAST CHANCE GOLF OUTING



The annual golf outing is a time to recognize donors and supporters of Wolverine Human Services through a fun-filled day on the green.

**COMING AGAIN SEPTEMBER 15th 2019**



# CIDER SLUSH



Core Orchards hosts a yearly cider slush fundraiser featuring live music, fall festivities, food trucks, doughnuts, hard cider, and cider slushies.

**COMING AGAIN OCTOBER 18TH 2019**

# STATE OF THE AGENCY



This day is all about celebrating the employees of Wolverine Human Services who make our mission of Helping Children to Be Victors possible. Staff come together to receive awards and share in all of the accomplishments of their team members.

**COMING AGAIN THIS FALL**

# THE ALUMNI OPPORTUNITY

## The idea:

- Work with your business or family to support a child
- Make an annual donation to support or develop a scholarship
- Provide an opportunity for our alumni to continue their success in education and career

## How the money is used:

Each year, WHS provides multiple scholarships to clients and their families who have successfully graduated from a treatment program or participated in one of our Community Based Programs.



### THE WAYNE ANDERSON AWARD

This award is given to a WHS alumnus who has overcome many serious difficulties. In spite of these challenges, each award winner remained focused on his or her personal growth and maturation with the help of agency programs and our dedicated staff.



### THE VICTORS AWARD

This award is presented to the WHS alumnus who experiences the most growth and general expansion of perspective through involvement in extra-curricular activities while in WHS programs, as these activities are recognized as an avenue for growth and self-discipline in our young clients.



### WILLIAM L. TILTAN SCHOLARSHIP

This award is presented to a WHS alumnus who shows the most progress in higher education pursuits.



### YOUNG FAMILY FOUNDATION SCHOLARSHIP

This award is given to a Wolverine client who demonstrates a continued desire and ability to be successful in their community to assist in the pursuit of a career through vocational or trade school.



### CREATE YOUR OWN AWARD OR SCHOLARSHIP

Create an award or scholarship of your choosing for a WHS alumnus.

# THE PIGGY BANK PROJECT



## THE IDEA:

- Use your piggy bank to collect donations
- Empty it once a month and write a check to Wolverine Human Services
- Teaches children how to save money while helping other children

## HOW THE MONEY IS USED:

4 times a year, Wolverine Human Services will send their foster children a package with items that they may not have access to otherwise.



IN HONOR OF THE GENEROUS DONATIONS RECEIVED, WOLVERINE HUMAN SERVICES FUNDS A YEARLY PIGGY BANK PICNIC FOR ALL FOSTER FAMILIES.

LEARN MORE ABOUT DONATION OPPORTUNITIES:  
[wolverinehs.org/donate](http://wolverinehs.org/donate)



# LEAVE A LEGACY

## The idea:

- Plan to, and honor the important people and memories in your life
- Sit down with WHS and a financial planner to outline your commitment
- Honor and keep giving for years to come

## How the money is used:

The money is used to support scholarships, facility upgrades, opportunities for our children, or however you see fit.



## MEMORIAL & TRIBUTES

Honor and celebrate people and events in your life by giving.



## PLANNED GIVING

Provide a strategic gift with a retirement, estate, financial, or philanthropic plan.

**THIS MICHIGAN HOCKEY SEASON, WOLVERINE HUMAN SERVICES IS PROUD TO SPONSOR ONE OF OUR FOSTER FAMILIES AS THEY TAKE A RIDE ON THE WHS ZAMBONI.**



**TEXT "PARENT" TO 51555 TO BECOME  
A FOSTER OR ADOPTIVE PARENT TODAY**



# DONOR RECOGNITION

A.O. Wood  
Aaron Cohen  
Abby Conway  
Amitoj Singh  
Andaiye Spencer  
Andi Mustafa  
Andre Beue  
Andrew Ingebritson  
Angela Livernois  
Angela Phillips  
Angelita Gonzales  
Anisha Tandon  
Anita Schmaltz  
Anna Greenblatt  
Anna Mayer  
Annet Schlosser  
Arnel Paril  
Ashlen Olive  
Audrey Meissner  
Beatrice V. Grenzke  
Beth Bica  
Beth Gotthelf  
Bob Ennis  
Breann White  
Brian Ho  
Brian Sharrow  
Briana Burns  
Brianna Meyer  
Brittany Crutcher  
Brittany Merrell  
Brittany Muski  
Bruce Keezer  
Cassy Eisbrenner  
Ceclia Savonen  
Chad Cavanaugh  
Chris Butzlaff  
Chris Harwood  
Christa Hennberry  
Christian & Deborah Lobb  
Christina Marsee  
Christina Robinson  
Cindy Brabbs  
Claire McCord  
Claire Mueller  
Clarice & Mike Killian  
Craig Durno  
Dan Lark

Dan Wiedmann  
Dana Pingatore  
Danielle Lukanowski  
Darla Johnson  
David Myers  
David Tear  
Dawn Drobnich  
Debra Burnett  
Demeca Dubose  
Denise Taylor  
Derrick McCree  
Diana Ori  
Don Brickel  
Eboni Jett  
Eddie Perry  
Eric Hans  
Eric Velliky  
Freddie Abiaad  
Gabriela Hejka  
Gail Gotthelf  
Gary Woodworth  
George Henry  
George McMullen  
George Pappas  
Gerard Meter  
Gilles Renard  
Gordon Fall  
Grace Farr  
Gregory Hoffman  
Gretchen Guisbert  
Harrington & Smalle Muchmore  
Heidi Voorhies  
Hezekiah Williams  
Holly McWilliams  
Jake White  
James Fuller  
James Fuller  
James Jarjosa  
James Lafrate  
Jamie Wakey  
Jane James  
Jason Cortez  
Jason Medeiros  
Jeff Iverson  
Jeffrey Peariso  
Jennifer Assaf  
Jennifer Carlson

Jennifer Somers  
Jennifer Wollack  
Jennifer York  
Jenny James  
Jerry Parker  
Jessica Gartrell  
Jessica Heyde  
Jessica James  
Joe Hasselblad  
Jon Carlson  
Jon Smalley  
Joseph Corey  
Joseph Laurencelle  
Joseph Vassallo  
Julie James  
Julie Netzký  
Justin Near  
Karen & Brian Martensen  
Katie & Ty Morrison  
Katy Haggis  
Katy Maiolatesi  
Kristjan Fourtune  
Kristy & Pat Sharrow  
Krystin Kreschmer  
Kyle Mansour  
Lafrate Logeman  
Lance Martinez  
Laura Rubens  
Lauren Dinverno  
Lauren Girson  
Laurie Aren  
Laverne Robinson  
Lawrence Cavanaugh  
Lexi Judkins  
Linda King  
Linda King  
Linda Liyab  
Lisa Williams  
Lora Boka  
Lori Smith  
Lori Wisz  
Lucas Whitney  
Lynsey Marchwinski  
Maackenzie Sterr  
Mackenzie Smith  
Manal Haddad  
Marc & Lauren Ranke



Margaret McKinney  
 Maria Grout  
 Mark James  
 Mark Music  
 Marty Daly  
 Matt & Kelly Jambright  
 Matt Lucas  
 Matt Schommer  
 Matthew Wolkhamer  
 Matthew Wollack  
 Megan Gutierrez  
 Megan Kate  
 Meghan Carter  
 Melissa Meike  
 Michael & Karen Paciorek  
 Michael Vanconant  
 Michael Varghese  
 Michael Williams  
 Michelle Gregory  
 Michelle Heiliger  
 Mike & Missy Cosby  
 Mike Shehadi  
 Missy Johnson  
 Misun Ebert  
 Mitch Mulcahey  
 Natalie Rude  
 Nate Lowery  
 Nick Keane  
 Nicole Canonier  
 Nicole D'Onofrio  
 Nicole Dumanois  
 Nicole Sims  
 Nicole Wheeler  
 Olivia Moore  
 Pamela Dymond  
 Patricia Lang  
 Patrick Higdon  
 Paul Brochert  
 Paul McGarry  
 Paul Whitney  
 Rachel Donovan  
 Rachel Gehm  
 Rania Haddad  
 Ray Barta  
 Richard Ochoa  
 Rick Rothermel  
 Robert & Judith Wollack  
 Robert Farris  
 Robert Rein  
 Robin Ceane

Ronnie Hamama  
 Russell Nixon  
 Ryan & Sarah Zengerle  
 Ryan Derderian  
 Sally & Scott O'Neil  
 Sarah Simmons  
 Seth Helfman  
 Shane Marosi  
 Shannon Bush  
 Sharaya Hoverman  
 Sharisse Myren  
 Shaylin McCann  
 Shelton Manley  
 Shiela Jones  
 Shirley A. Fischer  
 Sonja Williams  
 Stacey Fulller-Karson  
 Stacey Karson  
 Stephanie Ebert  
 Stephanie Harmon  
 Steve Reedy  
 Steven Kashat  
 Susan Eaton  
 Sveta Desai  
 Sydney James  
 Tabetha Martel  
 Taylor Hines  
 Ted Shottroff  
 Thomas & Lyn Marie Rogers  
 Tiffany Raymond  
 Tim Kilsz  
 Tina Daniels  
 Tobias Kpadenou  
 Tom Krolicki  
 Tony Roko  
 Trish Thane  
 Troy Murray  
 Vivian Howell  
 Warde Manuel  
 A & B Equipment and Sons  
 Amazon Smile  
 Belleville Annual Garden Club  
 Benevity Oneworld  
 Birmingham Rotary Club  
 Blake's Hard Cider  
 Blue Cross Blue Shield of MI  
 Blue Rock Technologies  
 Caught Up  
 Charity Golf International  
 Comerica Bank

Communication 101  
 Community Foundation  
 Cook GM  
 Corestaff Support Services  
 Daly Merritt  
 Defiore Hallmann & Company  
 Detroit Defenders  
 Detroit Green Carrot  
 Distinct Life  
 Facebook Donations  
 Fitness Things  
 Fresh Era  
 Give With Liberty  
 Golf Planner Pro  
 Growth Works  
 Interior Environments  
 JAC Technology  
 Kiwanis Club of Woodhaven  
 Larry Defiore  
 Loprete & Lyneis  
 Michigan Department of Agriculture and  
 Rural Development  
 My Hopes 4U  
 Near Perfect Media  
 Network For Good  
 Nosh Pit Detroit  
 NTFF Charity Fund  
 Orchard Children Services  
 Our Shepherd Lutheran Church  
 Paragon Properties  
 Pharmaceutical Medical Consulting  
 PLLC  
 Prime Office Innovations  
 Shift-Up  
 Sierra Station  
 Spectrum Human Services  
 State of Michigan  
 The Art Foundation  
 The Collective Academy  
 The Marshall Mathers Foundation  
 The Salvage Group  
 Thomas Group Consulting  
 Tilton & Dunn  
 Torrent Consulting  
 Truist  
 U of M School of Social Work  
 United Fresh Start Foundation  
 Vassar Rotary Club  
 Virtue Cider  
 Young Family Foundation

# EMPLOYEE DONOR RECOGNITION

Aja Burnett  
Alessia Kimbrough  
Alex Lacoste  
Almira Haslam  
April Brookins  
April McCullum  
Ashley Dart  
Aspen Cleveland  
Aurelio McQueen  
Azanean Petty  
Brandy Curtis  
Brian Walker  
Brittany Dickey  
Bryana Walker  
Carleatha Gary  
Carole Belcher  
Caroline Mielke  
Carolyn Johnson  
Carolyn Lewis  
Cherelle Dixon  
Chris Haines  
Christina McGuffie  
Christopher Mavin  
Corangela Travis  
Cornell Carter  
Corzell Sykes  
Courtney Neiderquill  
Daelon Williams  
Danielle Golden  
David Johnson  
Dekesiha Baugh  
DeMarcus Moore  
Derek Brewton  
Derek Thornton  
Derrick McCree  
Dolores Guerra-Schnapp  
Domineka Donald  
Donyeal Sizemore  
Doris Low  
Dulles Copedge  
Ebony Jett  
Elaine Pecinis  
Elayne Wordlaw  
Elizabeth Paul  
Elizabeth Rais  
Erica Amerson  
Shuna Johnson

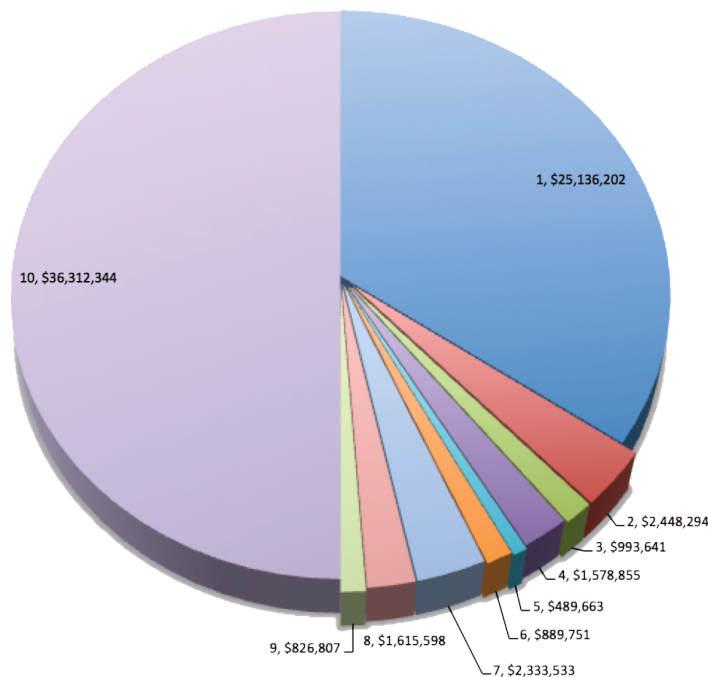
Spencer Richardson-Moore  
Stacey Fuller-Karson  
Stephanie Graczyk  
Stephanie Logan  
Stephen Baber  
Franklin Nivens  
Galen Martin  
Gibraun Hobson  
Gloria Harris  
Gregory Hoffman  
Gregory McDonald  
Inga Taylor  
Jacqueline Branch  
Jalen Graham  
Jalen Robinson  
Jamere Dixon  
James Keene  
Janae Wicker  
Jasmine Dillard  
Jazmine Dalpiaz  
Jeffrey Lee  
Jennie Wilcox  
Jermaine Sanders  
Jill Szagesh  
JoeDel Lowe  
Jordan Hearit-Hickey  
Joyce Oliver  
Louis Johnson Jr  
Judith Wollack  
Justin Cochrane  
Jynice Brown  
Kaelin Felton  
Kara Barkman  
Karen Ong  
Keith Jordan  
Kenton Gleason  
Kenyetta Steele  
Kevin Edwards  
Kirkland Harshaw  
Kristi Einem-Smith  
Kristina Young  
Krystal Guffey  
Kyle Golson  
Laquisha Clyburn  
Larry Patterson  
Lashawn Anderson  
Lashawn Slaten

Laura DeCarlo  
Laurice Crease  
Laurie Collins  
Letavia Young  
Lewis Gregory  
Lisa Brink  
Lorene Wamsley  
Luke Funston  
Lynette Amos  
Lynne Yeck  
Marc Dietrich  
Mark Howard  
Mark Snow  
Marsel Martin  
Matthew Ethington  
Matthew Mallory  
Melinda Briones  
Merima Logo  
Michael Case  
Michael Townsend  
Nathaniel Thomas  
Nicholas Taylor  
Nickeya Chapman  
Nicole Dumanois  
Niya Ford  
Nolan Moore  
Nyeshia Johnson  
Olivia Taylor  
Patricia Harris  
Paul Whitney  
Paulette Watts  
Philip Anderson  
Randall Miller  
Renisha Roulhac  
Robert Wollack  
Roxann Santos  
Royce Fanning  
Sandra DeMarais  
Shalia Jackson  
Shayna Hillenberg  
Sherri Richards  
Shiatoia Willis  
Stephen Billings  
Tacoya Miller  
Taylor Fischer  
Taylor Olrich  
Tena Murray

Terrance Kelly  
Therese Rowell  
Thomas Krolicki  
Tiffaney Pringle  
Tiffany Banks  
Tiffany Brookins  
Timothy Andress  
Tommie Dowdley  
Tracy Frazier  
Turquoise Rashid  
Victor Martin  
Victoria Benedict  
Wayne Szagesh  
Wesley Oglesby-Johnson  
William Jennings  
William White  
Yolanda Lomax  
Zachary Barnard

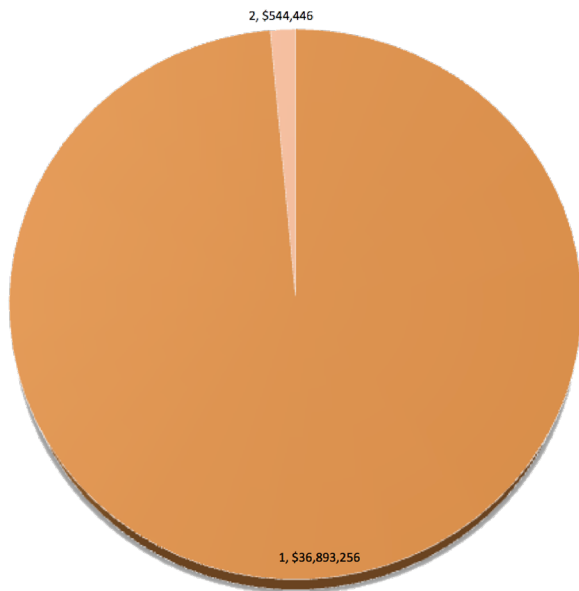


# FINANCIAL REPORT



## EXPENSES

- Supervision & Treatment: \$25,136,202
- Supplies: \$2,448,294
- Communication: \$993,641
- Facilities & Equipment: \$1,578,855
- Transportation: \$489,663
- Specific Assistance: \$889,751
- Other Operational: \$2,333,533
- Depreciation: \$1,615,598
- Interest: \$826,807
- Total: \$36,312,344



- Government: \$36,893,256
- Other: \$544,446
- Total: \$37,437,702

REVENUES OVER EXPENSES: \$1,125,358



WOLVERINEHS.ORG