

THE WOLVERINE

ANNUAL REPORT

HELPING
CHILDREN
TO BE
VICTORS
SINCE
1987.



LETTER FROM THE CEO

Hello and Welcome to Wolverine Human Services!

Since 1987, Wolverine Human Services (WHS) has become the largest child welfare agency providing treatment services to children and families of Michigan. Our Founder, Robert E. Wollack, MSW, began WHS after working in a variety of settings. Through his research and experience, Robert developed a treatment model that he believed would provide the best possible outcomes. After opening the flagship program on February 4, 1987, St. Jude's Home for Boys, Wolverine Human Services has grown significantly and has developed a vast array of treatment programs.

We currently have 19 different Treatment Programs at six sites, and four foster care and adoption offices. Our Residential Treatment Programs include secure and non-secure facilities for both males and females in Residential Foster Care, the Juvenile Justice system, and those in need of treatment for Behavioral Health and Substance Abuse. Our Community Based Programs include Foster Care, Adoption, Independent Living, and Young Adult Voluntary Foster Care. We are a statewide agency having served children from all 83 counties in Michigan. We also now provide secured treatment to children from other states throughout the country.

We have achieved our success by being flexible and taking calculated risks. We have been asked over the years by the Department of Health and Human Services and counties to develop programs to meet the ever-changing and growing needs of your youth in crisis and we have been able to accomplish that.

Our implementation of Cognitive Behavior Therapy (CBT) continues across our residential programs with Sustainment and CBT Coach teams. Some of our most seasoned staff members continue carrying the banner of CBT; introducing it to new staff members and clients. CBT teaches self-sufficiency for clients, so they do not need others to co-regulate their emotions; hence, we are focused on developing the "Six Core Skills" in our clients, helping them practice and apply them in their daily lives. Staff members work toward endorsement in the same "Six Core Skills," creating a common treatment language between all stakeholders and levels of care. This evidence-based program model allows for innovative treatment of children in a residential setting.

In the field of child welfare, things are always changing. At Wolverine Human Services, we want to be the model for the change that is to come. We are truly dedicated to our children and their families and are always striving to be the very best we can be. By dedicating ourselves to the needs of any child and any parent at any time, we truly are Helping Children to be Victors!

Judith Fischer Wollack, LMSW
Chief Executive Officer, Wolverine Human Services



TABLE OF CONTENTS

Letter from the CEO...	2
Our Mission & About Us...	5
Be The Solution Join The Team...	6
Executive Team...	7
Board of Trustees...	8
Letter from Board of Trustees...	9
Our Services...	10
Continuum of Care...	11
Any Child Any Parent Any Time...	12
Virtual Orientation...	13
Facilities Map...	14
Facilities...	15
Residential Treatment...	16
Success Data...	17
Community Based Programs...	18
Adoption...	19
Staff Accomplishments...	20
Brands of Wolverine...	21
Core Orchards...	22-24
Michigan Counseling Centers...	25
Fresh Era...	26
Awards and Scholarship Banquet...	27-28
Arbor Day...	29
Piggy Bank Picnic...	30
Last Chance Golf Outing At Top Golf...	31
Cider Slush...	32
State of the Agency...	33
The Alumni Opportunity...	34
Scholarships and Awards...	35
Piggy Bank Project...	36
Leave A Legacy...	37
U of M Partnership...	38-39
Donors Recognition...	40-42
Employee Donors...	43-44
Financial Report...	45

OUR MISSION

At Wolverine Human Services, our mission is Helping Children to be Victors.

ABOUT US

Wolverine Human Services is the largest child welfare agency providing the full continuum of care to children in Michigan. WHS offers both Residential Treatment and Community Based Programs to children and families in all 83 counties of the state. Residential Treatment includes programs in Behavioral Health, Substance Abuse, Juvenile Justice, and Residential Foster Care. Community Based Programs include Foster Care, Adoption, Independent Living, and Young Adult Voluntary Foster Care. WHS also supports the community through a weekly food distribution program and a soup kitchen open on the weekends.

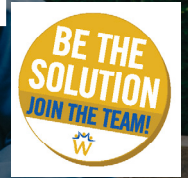
To further engage with the community, Wolverine Human Services has developed 3 other organizations throughout the state: Core Orchards, Michigan Counseling Centers, and Fresh Era. Core Orchards seeks to provide access to education and nutrition through community apple orchards. Michigan Counseling Centers provides out-patient counseling services to any- one in need of support and treatment, specifically past clients and their families. Fresh Era is a group of young professionals networking and volunteering in Detroit and its neighboring areas.

Over the years, as we continue to expand our services and programs, our mission remains the same—Helping Children to be Victors.



BE THE SOLUTION JOIN THE TEAM

BENEFITS OF WORKING AT WOLVERINE



\$20,000

APPROXIMATE BENEFIT
PACKAGE AMOUNT

\$10,000

COMPREHENSIVE MEDICAL
BENEFIT PACKAGE

\$7,500

COLLEGE TUITION REIMBURSEMENT
UP TO \$7500 (BASED ON 30 CREDITS
IN A YEAR)

\$500

IN ANNUAL BONUS
OPPORTUNITIES FOR CLINICAL
EMPLOYEES

\$250

REFERRAL BONUSES WITH
ONE REFERRAL

\$25

EMPLOYEE OF THE MONTH
BONUSES

THE EMPLOYEE REFERRAL BONUS STRUCTURE: \$250 FIRST YEAR,
\$500 SECOND YEAR, AND \$750 THIRD YEAR.

COLLEGE DISCOUNTS: DAVENPORT UNIVERSITY 20% DISCOUNT,
SPRING ARBOR UNIVERSITY 10% DISCOUNT FOR ALL PROGRAMS

ANNUAL PAID LEAVE FOR PART TIME WORKERS (25 HOURS OR MORE PER WEEK)
AFTER 1 YEAR OF EMPLOYMENT

COMMUNITY BASED PROGRAMS NEW HIRE WHO ARE CWTI CERTIFIED CAN
RECEIVE A \$2,000 BONUS

10-15 DAYS OF PAID TIME OFF

(ACCRUED IN FIRST YEAR) PLUS 7 PAID HOLIDAYS (AFTER 90 DAYS OF EMPLOYMENT) \$1800

TEXT "JOBS" TO 51555 OR VISIT WOLVERINEHS.ORG/CAREERS TO LEARN
ABOUT EMPLOYMENT OPPORTUNITIES WITH WHS.

EXECUTIVE TEAM



Judith Fischer Wollack

Chief Executive Officer



Thomas Krolicki

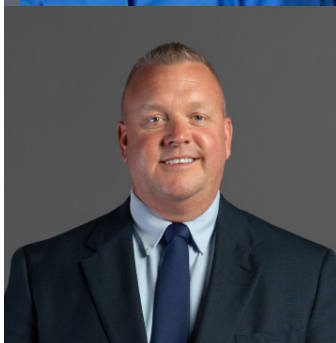
Chief Operating Officer Wolverine Human Services

Chief Operating Officer Michigan Counseling Centers



Annet M. Schlosser

Vice President of Human Resources



Paul Whitney

Vice President of Residential Programs



Matthew Wollack

Vice President of Strategic Development

BOARD OF TRUSTEES



Karen Paciorek, Ph.D., Chair, Eastern Michigan University

Ronald Warhurst, First Vice-Chairman

Robert E. Wollack, Second Vice-Chairman, Wolverine Human Services

Gerard Meter, Treasurer, Steelcase, Inc.

James Libs, Secretary, Brown & Brown of Detroit

Vincent J. Brennan, Trustee, Denali Energy

Adam R. Burgess, Trustee, Plante Moran Cresa

Martin F. Daly, Trustee, Daly Merritt, Inc.

Warde Manuel, Trustee, University of Michigan

Jonathan Minder, Trustee, Maximus Ventures

Jordan Morgan, Trustee, The Jordan Morgan Foundation

Brittany Muneio, Trustee, Plastipak Packaging

Ritchie Piert, Trustee, Marjin Group

Thomas Rogers, Trustee

LETTER FROM BOARD OF TRUSTEES

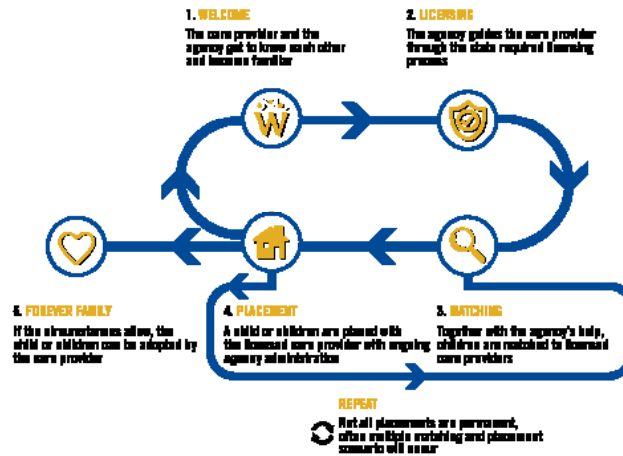
Wolverine Human Services has consistently been a leader in the State of Michigan serving at-risk youth and families for 33 years. Nationally, Wolverine Human Services is gaining attention for the innovative work done to serve young people and families in our state. Our 14 board members are committed to supporting the outstanding work the members of the WHS family of dedicated professionals carry out each and every day. Over the years, WHS has grown and created new outreach services and partnerships all while consistently providing quality, compassionate care that stays true to the core values and guiding principles of WHS. We support WHS and continue to seek opportunities to celebrate many stories of hope and success. Today, more than ever, vulnerable youth and families in Michigan need programs and services to support them on their path to success. Whether it comes in the form of advocacy, legislation, case management, community outreach or direct counseling, the data show that Wolverine makes a significant difference in the lives of so many. More than statistics, our success stories are the many personal tributes that may go unnoticed in public through our day to day work. But those successes never go unnoticed to our clients, families, and staff. We celebrate every victory, large and small. Our adoption and foster care program is one of the largest in the state and many forever families have been created as a result of this outstanding community based program. Wolverine also supports Core Orchards, the Fresh Era Board and Michigan Counseling Centers. The Board recognizes the dedicated work of all staff at Wolverine Human Services and has our appreciation and gratitude for making a positive difference for so many who need our support. Together we are Helping Children to be Victors!

Karen Menke Paciorek, Ph.D.

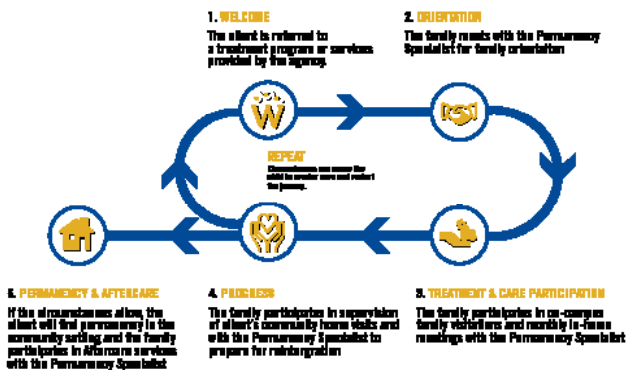
Chair, Wolverine Human Services Board of Trustees

OUR SERVICES

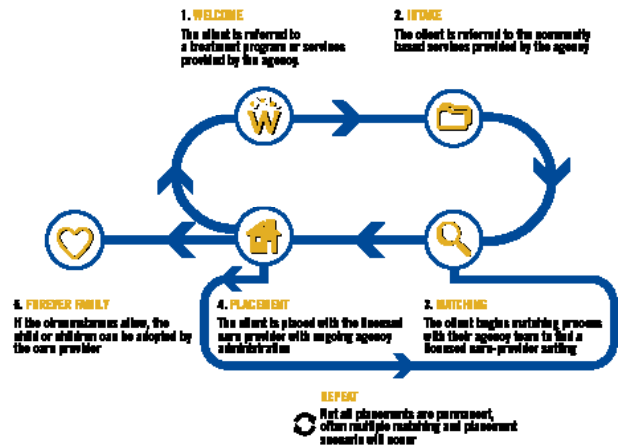
THE CARE PROVIDER JOURNEY



THE CLIENT'S FAMILY JOURNEY



THE COMMUNITY BASED CLIENT JOURNEY





FOSTER CARE AND ADOPTION



**FAMILY
REUNIFICATION**



**INDEPENDENT
LIVING**



**YOUNG ADULT
VOLUNTARY
FOSTER CARE**

BEHAVIORAL HEALTH, SUBSTANCE ABUSE, JUVENILE JUSTICE & RESIDENTIAL FOSTER CARE



**EMERGENCY
SHELTER**



**SECURE
TREATMENT**



**NON-SECURE
TREATMENT**



**SHORT-TERM
SHELTER AND
PLACEMENT**



**ANY CHILD,
ANY PARENT,
ANY TIME**

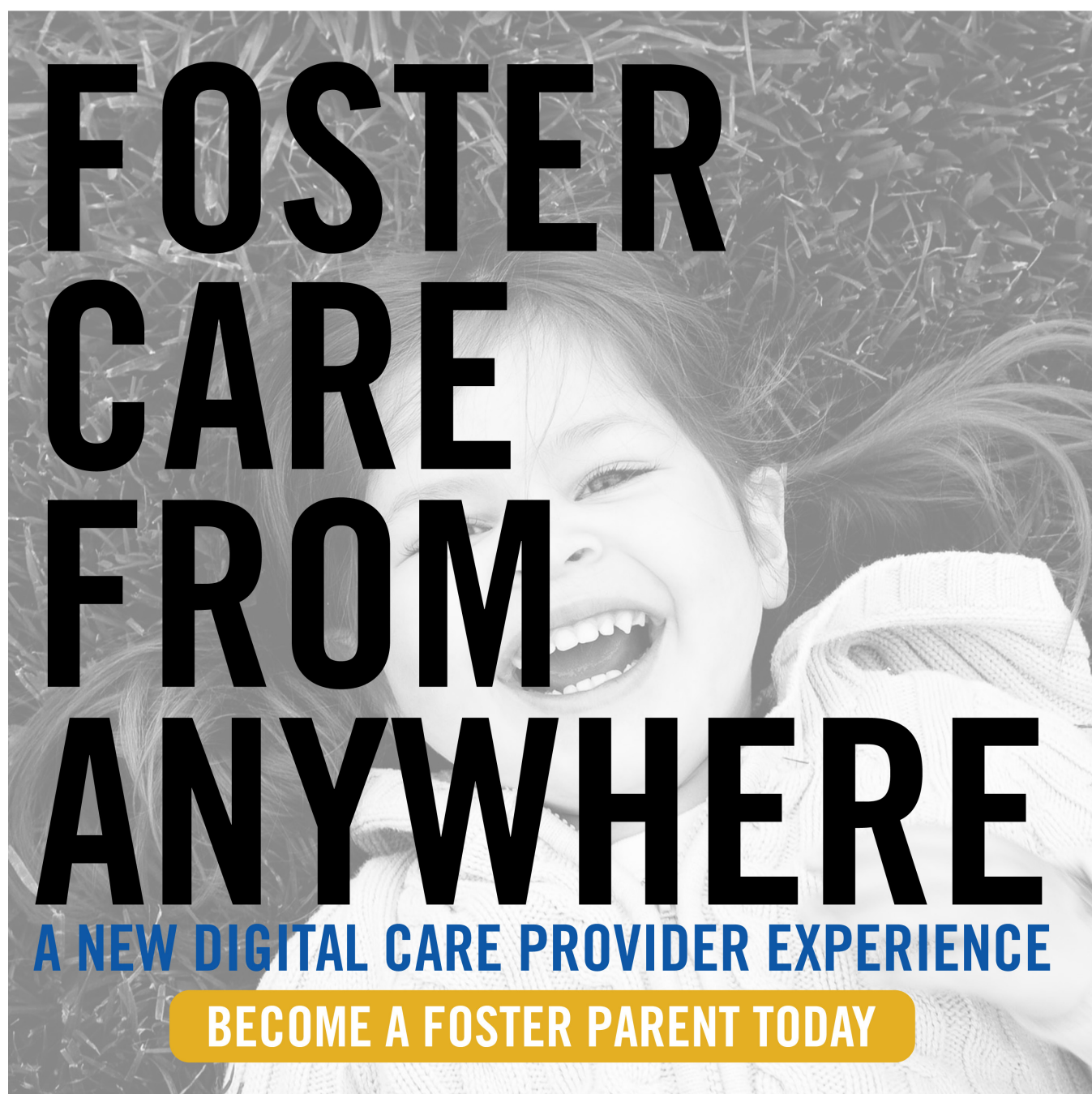
**FOSTER OR ADOPT WITH WOLVERINE HUMAN SERVICES TEXT "PRIDE" TO 51555
FOR MORE INFORMATION OR VISIT WOLVERINEHUMANSERVICES.ORG**

VIRTUAL ORIENTATION

We are excited to announce the launch of “Foster Care from Anywhere” experience that will allow you to become a foster care parent anywhere in the state of Michigan without ever having to leave your home. WHS is the only agency in the state offering the “Foster Care from Anywhere” experience. You will be able to attend a virtual orientation, submit documentation virtually, and access our Care Provider Portal.

Attending a Foster Care Orientation with our team is the first step in becoming a foster care parent and you can now do this virtually. Virtual Orientations are taking place over Zoom Video Conferencing. Virtual Orientations will be led by one of our trainers, and you can expect other future foster care parents to be attending orientation with you! The best way to sign up for an upcoming orientation is by filling out this form:

<https://www.wolverinehs.org/services/foster-care-adoption/care-provider/>



FOSTER CARE FROM ANYWHERE

A NEW DIGITAL CARE PROVIDER EXPERIENCE

BECOME A FOSTER PARENT TODAY

Wolverine Human Services

- Flint
- Taylor
- Warren
- Bloomfield Hills
- Detroit
- Saginaw
- Vassar

Core Orchards

- Detroit
- Saginaw

The DEN

- Detroit

Michigan Counseling Centers

- Bloomfield Hills
- Taylor

Fresh Era

- Detroit

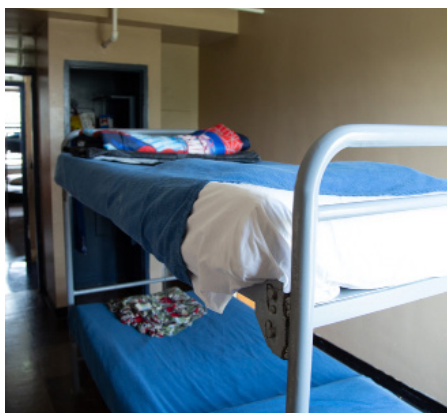


FACILITIES

At Wolverine Human Services, we are committed to creating and maintaining modern, therapeutic environments for our children and our employees. In what may be a very uncertain and tumultuous time for our children, we seek to provide them with safety and security.

In our Residential Facilities, we have researched the most durable, yet comfortable materials when it comes to walls, floor-ing, paint color, and window placement.

DETROIT



SAGINAW



VASSAR



BLOOMFIELD HILLS

FLINT

TAYLOR

WARREN



As the needs of our children continue to change, we are committed to continuously evolving our facilities and offices so that they are as safe, modern, and therapeutic as possible for the children that we serve.

RESIDENTIAL TREATMENT

Wolverine Human Services' programs focus on adolescents suffering from the social injustices of abuse and neglect and those involved in delinquent activities. Our residential treatment programs are anchored on a set of tried and true principles to help the health and wellbeing of these adolescents.

Behavioral Health Treatment

- Foundations – Males 12-17 – Vassar, MI – Non-Secure
- Passages – Females 12-17 – Vassar, MI – Non-Secure
- Social & Behavioral Learning Center – Males 12-17 – Saginaw, MI – Secure
- Endeavors – Females 12-17 – Saginaw, MI – Secure

Substance Abuse Treatment

- Victor's Substance Abuse Treatment Center – Males 12-17 – Detroit, MI – Non-Secure
- Wolverine Center for Addiction Recovery & Education Intensive (B) – Males 12-17 – Vassar, MI – Non-Secure
- Wolverine Center for Addiction Recovery & Education Intensive (G) – Females 12-17 – Vassar, MI – Non-Secure
- Wolverine Center for Addiction Recovery & Education R – Males 12-17 – Vassar, MI – Non-Secure
- Wolverine Growth & Recovery Center Vassar Shelter – Males 12-17 – Vassar, MI – Non-Secure
- Wolverine Center for Addiction Recovery & Education – Males 12-17 – Saginaw, MI – Secure

Juvenile Justice

- Victor's Center PPN – Males 12-17 – Detroit, MI – Non-Secure
- Phoenix Sexual Offender Treatment – Males 12-17 – Vassar, MI – Non-Secure
- Journeys – Females 12-17 – Vassar, MI – Non-Secure
- Wolverine Sexual Aggression Recovery Program – Males 12-17 – Saginaw, MI – Secure

Residential Foster Care

- St Jude's - Males 12-17 – Detroit, MI – Non-Secure
- Detroit Shelter – Males 6-17 – Detroit, MI – Non-Secure
- Victor's Center Residential Foster Care – Males 12-17 – Detroit, MI – Non-Secure
- WGRC Residential Foster Care – Males 12-17 – Vassar, MI – Non-Secure
- Wolverine Intensive Assessment Unit – Males 12-17 – Vassar, MI – Non-Secure

SUCCESS DATA

53

CLIENTS RECEIVED
PSYCHOLOGICAL EVALUATION

745

CLIENTS RECEIVED
DENTAL CARE

192

CLIENTS RECEIVED
OPHTHALMOLOGICAL CARE

184

GLASSES RECEIVED
BY CLIENTS

RESTRAINT DECREASED BY 22%: NUMBER DECREASED FROM
1101 TO 857

FAMILY SATISFACTION SCORE REMAINED CONSISTENT AT 4/5

COMMUNITY BASED PROGRAMS

OUR SERVICES

Foster Care: A system in which a minor has been placed into a private home of a state-certified caregiver.

Adoption: A process whereby a person assumes the parenting of a child from that person's biological or legal parent or parents.

Teen Support Services: A system in which an adult provides a home and mentorship to a teen as they prepare for independence and adulthood.

Young Adult Voluntary Foster Care: A voluntary system for individuals with an open foster care case or who exited foster care at/or after 18 years of age that supports youth in their transition to independence and adulthood.



BLOOMFIELD HILLS

43902 Woodward Ave Suite #100, Bloomfield Hills, MI 48302 (248) 724-2643

TAYLOR

20300 Superior Rd #160, Taylor, MI 48180 (734) 284-6264

WARREN

14061 13 Mile Rd #1, Warren, MI 48093 (586) 751-2802

FLINT

1311 Linden Rd, Flint, MI 48532 (810) 234-0489

ADOPTION

FOSTER CARE

86
NEW
INTAKES

103
PERMANENCY
ACHIEVED

103
YOUTH SERVICED
(INCLUDES ANY CHILD IN FC DURING FY19)

INDEPENDENT LIVING YOUNG ADULT VOLUNTARY FOSTER CARE

5
NEW
INTAKES

50
TRADITIONAL LICENSED
HOMES OPENED

33
RELATIVE LICENSED
HOMES OPENED

20
UNLICENSED
HOMES

STAFF ACCOMPLISHMENTS

379 STAFF ENDORSED IN LEVEL COGNITIVE BEHAVIOR THERAPY

601 STAFF TRAINED AND RE RETAINED IN CPR

33 STAFF CERTIFIED IN YOUTH MENTAL HEALTH AND FIRST AID

10 STAFF CERTIFIED IN APPLIED SUICIDE INTERVENTION SKILLS TRAINING

1 STAFF BECAME A COA PEER REVIEWER

1 THERAPIST EARNED THEIR CBT CERTIFICATION TO BE CERTIFIED CBT THERAPIST

3 STAFF RECEIVED MASTER'S DEGREES

6 STAFF RECEIVED UNDERGRADUATE DEGREES

LEVEL 2 THERE WERE **56** PEOPLE ENDORSED

LEVEL 3 THERE WERE **12** PEOPLE ENDORSED



Wolverine

Human Services

Helping Children to be Victors

Helping Children to be Victors



**COMMUNITY
APPLE ORCHARDS**



**OUTPATIENT
COUNSELING SERVICES**

FRESH ERA

**YOUNG PROFESSIONALS
GROUP**

CORE ORCHARDS

“PLANTING THE SEEDS TO EMPOWER CHILDREN AND COMMUNITIES TO LEARN AND GROW.”

WHO WE ARE

Core Orchards, an extension of Wolverine Human Services, was founded in the wake of a crumbling economy. Rather than give up on the city of Detroit, as many already had, we were determined to stay in a community that Wolverine invested in for over 30 years. This community, the Riverbend neighborhood on Detroit's East side, has been repeatedly overlooked in redevelopment plans or initiatives. Much like an apple core, some may think it's better off thrown away but our diverse team of dreamers and doers knows what the core holds: seeds. Seeds hold new life and new opportunities to learn and grow. We were inspired by the potential within and decided to plant our roots—along with hundreds of honey crisp apple trees, of course, in 2018.

VISION

Core orchards' ultimate goal is to become Detroit's first you-pick apple orchard, that provides nutritional, educational, economical, and vocational opportunities for those in our community and beyond. After the addition of a cider mill, farmers market, learning center, and shared community event space, Core Orchards will not only support the riverbend neighborhood but showcase it, to visitors and locals alike!

WHAT WE DO

TREES

DETROIT



2610 LENOX
DETROIT, MI 48215
0.5 ACRES
350 TREES
PLANTED APRIL 2018

BUENA VISTA



2424 N OUTER DRIVE
SAGINAW, MI 48306
5 ACRES
4500 TREES
PLANTED APRIL 2017

BEES

Thanks to a partnership with Bees in the D, three honeybee hives call our orchard home. We rely on these important insects to pollinate our trees, flowers, and plants, ensuring a fruitful harvest of juicy apples and produce.

& BEYOND

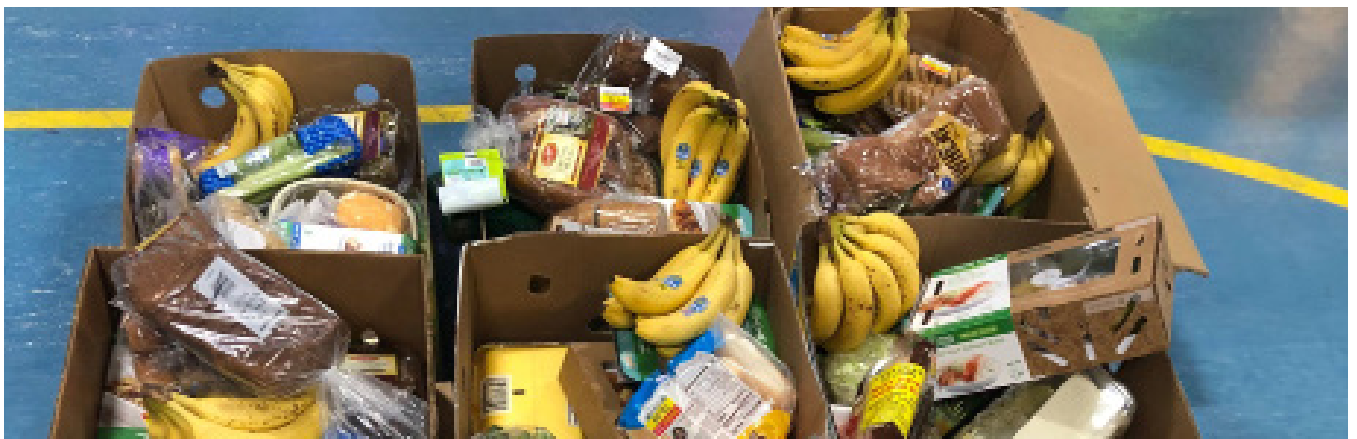
HOOP HOUSE

70-foot covered community garden complete with 14 raised beds. Fruits, vegetables, herbs, and spices grown here are free to our community members, fulfilling a need in an area that lacks access to fresh, healthy foods.



FOOD PANTRY

Our food pantry is made possible through a partnership with Forgotten Harvest, who “rescues” surplus food from local stores. Every Monday, we unload and sort 5 pallets of food which is then packed into boxes, each providing a family of four with healthy food for one week. On average, we distribute 80 boxes each Monday, providing enough food for 320 community members.



SOUP KITCHEN

Our full commercial kitchen serves the Riverbend community while sharing food, friendship, and fun. Meals take place twice a month, with special celebrations for holidays such as Thanksgiving and Martin Luther King, Jr. Day.



GET INVOLVED

VOLUNTEER

We welcome volunteers of all ages, abilities, and backgrounds. With events occurring weekly, there are plenty of opportunities for you, your family, group, or school! Whether it is picking fresh veggies, handing out groceries, or serving a warm meal, your service helps positively impact our Riverbend community and the families that call it home. We also host larger community outreach events such as blanket making in the winter and personal hygiene drives. Please contact our Community Coordinator Tori Williamson for more details: 313.949.0668 // williamsonv@coreorchards.com

DONATE: www.coreorchards.com/donate

CONNECT: Website, Facebook, Instagram links



THANK YOU TO OUR SPONSORS!

BEE HIVE SPONSORS:

Vivian Young
Erika lafrate

BENCH SPONSORS:

Bench 1: Gifted by Alexandra DeFiore
Bench 2: Gifted by The Daly Family
Bench 3: Gifted by Iris and Jim Fuller in honor of
Stacey Fuller-Karson
Bench 4: Gifted by WHS in honor of
Judith and Robert E. Wollack

TREE SPONSORS 2019:

Claire McCord
Iris and Jim Fuller
Jon Smalley
Karen Paciorek
Jennifer and Matthew
Wollack
Suzanne and Ron Geer

MICHIGAN COUNSELING CENTERS

What is your mission?

Our mission is to provide the community with the guidance and support needed to help resolve issues with life, relationships, and family.

What type of population do you serve and why?

We serve anyone in the community in need of outpatient counseling. Specifically, we focus on current families and past clients that need additional support and treatment.

Where are you located?

MCC is currently offering services in Bloomfield Hills and Taylor.

What was a major milestone this year?

A major milestone this year was opening up two office locations to serve the community.

What was an obstacle that you overcame this year?

An obstacle we overcame this year was working with insurance providers to offer as many coverage options as possible to our clients.

What does the future hold for Michigan Counseling Centers?

The future holds additional locations in Flint and Warren

MCC is growing and in need of therapists!



FRESH ERA

What is your mission?

Our mission is to provide opportunities for young Metro-Detroiters to participate in the social and economic renaissance of the city.

What type of population do you serve and why?

We serve the needs of Wolverine's clients, as well as other local non-profits participating in the revitalization of the Detroit community. Wolverine Human Services has been an active community member in Detroit for over 30 years, and we believe it is critical to continue supporting the city where we started.

Where are you located?

We are located on Detroit's Eastside in the Jefferson Mack Community, as a part of the Wolverine Human Services' campus. Additionally, we participate in activities throughout Southeast Michigan.

What were milestones this year?

Installing little libraries at multiple locations around the city to promote literacy in the community.

Belle Isle Spring clean up in April

Participated in the American Home Fitness Women Run the D Marathon.

Sponsored and participated in the Lung Force Walk with the American Lung Association.

What does the future hold for Fresh Era?

The future holds endless opportunities for Fresh Era and its members. We look forward to each new calendar year and treat it as a blank page, filling in the space with limitless experiences for our members and our community to learn and grow.

FRESH ERA

AWARDS AND SCHOLARSHIP BANQUET

Every year, Wolverine Human Services celebrates 4 amazing victors that graduated from one of our programs. We also honor one of our amazing care provider families and a community member that is making a difference in the lives of many.

The 33rd Annual Awards and Scholarship Banquet was held at the Jack Roth Stadium Club and it included a tour of the Michigan Football team locker room as well as time to hang out on the field at the Big House!



THE CREATING HOPE AWARD

Is given to one care provider family who truly goes above and beyond every day helping their children to be victors!

*The 2019 Creating hope award was given to **Heather and James Kilgore***



James and Heather Kilgore have been foster parents with Wolverine Human Services since July 2016. They first came to WHS because they wanted to ultimately adopt a child. Although that was the family's goal, the family has successfully fostered seven children. The family just finalized their first adoption in March 2019. This family epitomizes what a foster family should be. They are encouraging and never give up on a child once they have agreed to care for that child. They have built strong bonds with the birth parents and continue to assist with children that have returned home. When one of the children they cared for was exhibiting very difficult behaviors and emotions due to trauma they had endured, the family was by the child's side asking what they could do to help. The commitment they have shown has been inspiring and they are a wonderful example of what "Helping Children to Be Victors" really means. Thank you for all that you do and the great example you both are to other foster and adoptive families and to the children that you have served.

ADVOCACY AWARD

The Advocacy Award is presented to an individual who has made a significant long- term impact through advocacy on the lives of Michigan’s children and demonstrates endless dedication to youth across the state of Michigan. This person truly lives the mission of Helping Children to be Victors beyond the walls of Wolverine Human Services.



The 2019 Advocacy Award was given to Jen Wrayno, Director of the MDHHS Children’s Services Agency and a foster parent: “Having seen the challenges from both sides, as a foster parent and while working, I am driven in both directions to improve our system. I can see change that needs to happen and it really hits home for me when our system works and doesn’t work sometimes”

Join us for the 35th Annual Awards and Scholarship Banquet on April 23rd 2021

BANQUET SPONSORS:

PharmaScript
Young Family Foundation
Daly Merritt/Assured Partners
William Tilton
BlueRock
Pryor DeFiore
Cook GM
Spectrum Human Services
Orchards Children’s Services
Muchmore, Harrington and Smalley
Judith and Robert Wollack
Marco
U of M School of Social Work
U of M Athletics
Growth Works
BlueRock
Thomas Group

ARBOR DAY CELEBRATION

Arbor day is the official anniversary of Core Orchards Detroit and was celebrated on May 3rd 2019.

We had amazing volunteers from Nestle and Quicken Loans help plant 50 new trees in our orchard, plant seeds in our community garden/hoop house and assist with the neighborhood clean-up.



ARBOR DAY 2021 IS ON APRIL 30TH.

Stay tuned for information on our 2021 Arbor Day Celebration

PIGGY BANK PICNIC

Wolverine Human Services is eternally grateful to the Foster Care providers who support our Community Based Programs. We show our gratitude by holding a Piggy Bank Picnic each summer for these amazing families to enjoy! Instead of a traditional picnic, we had two dates in August for families to come out to Greenfield Village and spend the day taking in the sights and experiencing all that Greenfield Village has to offer. Each family was given vouchers for lunch so they could enjoy lunch at their leisure.



We are excited to host the 2021 picnic at the Jimmy John's baseball field in Utica. Families can enjoy a full picnic buffet while watching a fun and exciting baseball game. Date TBD.

LAST CHANCE GOLF OUTING AT TOPGOLF

September 15th 2019 was our first golf outing at Topgolf in Auburn Hills. This golf outing is great for experienced golfers as well as the inexperienced. Guests were able to enjoy appetizers, drinks and dinner while socializing and playing “golf”. Prizes were given to the top 3 teams. We also had a 50/50 raffle. The funds raised were used for Operation Good Cheer, the Christmas gift program for Wolverine’s youth in care.



2019 GOLF SPONSORS

Daly Merritt/Assured Partners
Braun Kendrick
PharmaScript
Young Family Foundation
William Tilton
Judith and Robert E. Wollack
BlueRock
Cook GM
Comerica Bank
Lacey and Jones

Muchmore, Harrington and Smalley
Orchards Children’s Services
Sellers GMC
Spectrum Human Services
Pryor DeFiore
GrowthWorks
Aunt Sparkie’s
USA Insulation
NFP
HSAWCF

THE LAST CHANCE GOLF OUTING WILL RETURN ON SEPTEMBER 27th 2021

CIDER SLUSH

The 3rd Annual Cider Slush was on Friday October 17th at Eastern Market. The event included hard cider samples from Blake's, Virtue, B.Nektar, Fieldstone, St. Andrew and St. Julia. Attendees enjoyed our signature drink which is frozen Cider with a shot of fireball sponsored by Sazarec, live music by Collision Six, food trucks and more! A great time was had by all!



CIDER SLUSH PARTNERS:

Blake's Orchards
B.Nektar
Fieldstone
St. Ambrose
St. Julian
Virtue

CIDER SLUSH SPONSORS:

Assured Sponsors	Loyaltee
USA Insulation	Absopure
Fresh Era	Yaldo Eye Center
Display Group	Muchmore, Harrington and Smalley
WHS	
Sazarec	

STATE OF THE AGENCY

This day is all about celebrating the employees of Wolverine Human Services who make our mission of “Helping Children To Be Victors” possible. Staff come together to receive awards and share in all of the accomplishments of the agency and their team members.



COMING FALL 2020

THE ALUMNI OPPORTUNITY

The idea:

- Work with your business or family to support a child
- Make an annual donation to support or develop a scholarship
- Provide an opportunity for our alumni to continue their success in education and career

How the money is used:

Each year, WHS provides multiple scholarships to clients and their families who have successfully graduated from a treatment program or participated in one of our Community Based Programs.



THE WAYNE ANDERSON AWARD

This award is given to a WHS alumnus who has overcome many serious difficulties. In spite of these challenges, each award winner remained focused on his or her personal growth and maturation with the help of agency programs and our dedicated staff.



THE VICTORS AWARD

This award is presented to the WHS alumnus who experiences the most growth and general expansion of perspective through involvement in extra-curricular activities while in WHS programs, as these activities are recognized as an avenue for growth and self-discipline in our young clients.



WILLIAM L. TILTON SCHOLARSHIP

This award is presented to a WHS alumnus who shows the most progress in higher education pursuits.



YOUNG FAMILY FOUNDATION SCHOLARSHIP

This award is given to a Wolverine client who demonstrates a continued desire and ability to be successful in their community to assist in the pursuit of a career through vocational or trade school.



CREATE YOUR OWN AWARD OR SCHOLARSHIP

Create an award or scholarship of your choosing for a WHS alumnus.

2019 SCHOLARSHIP RECIPIENTS

The Wayne Anderson Award is given to an individual who has overcome great challenges. Our award winner remained focused on personal growth and success through everything. This award was given to **Khierston Powers**



The Victors Award is given to a former client who experiences the most growth and general expansion of perspective through involvement in extra-curricular activities. Trust me when I say that our award winner, **Kenneth Isaacson** has done that and more!



William L. Tilton Scholarship was presented to **Rojuan Holloway** who is a Wolverine alum that showed the most progress in higher education pursuits. Rojuwan was the first in his family to pursue higher education.



Young Family Foundation Scholarship is given to a former client to assist in the pursuit of a career through vocational or trade school. **Drake Thomas** is a former CBP client with aspirations to become a Master Plumber.



THE PIGGY BANK PROJECT



THE IDEA:

- Use your piggy bank to collect donations
- Empty it once a month and write a check to Wolverine Human Services
- Teaches children how to save money while helping other children

HOW THE MONEY IS USED:

4 times a year, Wolverine Human Services will send their foster children a package with items that they may not have access to otherwise.



IN HONOR OF THE GENEROUS DONATIONS RECEIVED, WOLVERINE HUMAN SERVICES FUNDS A YEARLY PIGGY BANK PICNIC FOR ALL FOSTER FAMILIES.

LEARN MORE ABOUT DONATION OPPORTUNITIES:

wolverinehs.org/donate

To donate text "PIGGY" to 51555

LEAVE A LEGACY

The idea:

- Plan to, and honor the important people and memories in your life
- Sit down with WHS and a financial planner to outline your commitment
- Honor and keep giving for years to come

How the money is used:

The money is used to support scholarships, facility upgrades, opportunities for our children, or however you see fit.



MEMORIAL & TRIBUTES

Honor and celebrate people and events in your life by giving.



PLANNED GIVING

Provide a strategic gift with a retirement, estate, financial, or philanthropic plan.

U OF M PARTNERSHIP

U of M Partnership: For the last 3 years WHS has been a proud partner of Michigan Athletics. We have had the pleasure of sponsoring one of our foster families as they get the opportunity to ride the WHS Zamboni between periods! WHS has also sponsored U of M's Trail to the Victors which is a 5K and U of M Movie Night, which is a free event for children and families to come enjoy a movie on the football field inside the Big House.



Henry Ford Community Outreach Partnership: Through this partnership, the Philanthropy team attends quarterly meetings along with many other nonprofit organizations where we have the opportunity to learn about one another as we look for opportunities to connect and collaborate. This partnership has given the opportunity to schedule visits to the Henry Ford Museum, Ford Rouge Factory Tour and Greenfield Village for our residential clients and get tickets to special events for our Care provider families. Our clients and families have been given the opportunity to enjoy all the events:

1. Holiday Nights
2. Halloween Nights
3. 4th of July Salute to America
4. Rouge Factory Tour
5. Greenfield Village Outings
6. Museum
7. Picnic

PISTONS Community Ticket Program donated over 225 tickets to cheer on the Detroit Piston's at LCA in 2019.

DETROIT TIGERS FOUNDATION DONATED 125 Tickets to watch the Detroit Tigers vs.Chicago White Sox 9/20/2019

Upcoming Events:

Awards and Scholarship Banquet April 23rd 2021 @ the Rattlesnake Club

Arbor Day- April 30th 2021

Foster Care Month Celebration May 2021

Picnic- Jimmy John's baseball Field Summer 2021

Operation Good Cheer

Last Chance Golf Outing September 27th 2021 @ Topgolf

Fall Harvest Day- October 2021

State of the Agency- Fall 2021

November is Adoption Month

DONOR RECOGNITION

Absopure
A & B Equipment and Sons
A.O. Wood
Aaron Cohen
Abby Conway
Amazon Smile
Amitoj Singh
Andaiye Spencer
Andi Mustafa
Andre Beue
Andrew Ingebritson
Angela Livernois
Angela Phillips
Angelita Gonzales
Anisha Tandon
Anita Schmaltz
Anna Greenblatt
Anna Mayer
Annet Schlosser
Arnel Paril
Ashlen Olive
Assured Partners
Audrey Meissner
Aunt Sparkie's
Beatrice V. Grenzke
Belleville Annual Garden Club
Benevity One World
Beth Bica
Beth Gotthelf
Big Family of MI
Birmingham Rotary Club
Black Family Foundation
Blake's Hard Cider
Blue Cross Blue Shield of MI
Blue Rock Technologies
Bob Ennis
Braun Kendrick
Breann White
Brian Ho
Brian Sharrow
Briana Burns
Brianna Meyer
Brittany Crutcher
Brittany Merrell
Brittany Muski
Bruce Keezer

Cassy Eisbrenner
Caught Up
Cecilia Savonen
Chad Cavanaugh
Charity Golf International
Child's Hope
Chris Butzlaff
Chris Harwood
Chris Holmes
Christa Hennberry
Christian & Deborah Lobb
Christina Marsee
Christina Robinson
Cindy Brabbs
Claire McCord
Claire Mueller
Clarice & Mike Killian
Club Motiv8
Comerica Bank
Communication 101
Community Foundation
Cook GM
Corestaff Support Services
Craig Durno
Daly Merritt
Dan Lark
Dan Wiedmann
Dana Pingatore
Danielle Lukanowski
Darla Johnson
David Myers
David Tear
Dawn Drobnich
Debra Burnett
Defiore Hallmann & Company
Demeca Dubose
Denise Taylor
Derrick McCree
Detroit Defenders
Detroit Green Carrot
Detroit Piston's Foundation
Detroit Tiger Foundation
Diana Ori
Display Group
Distinct Life
Don Brickel
Eboni Jett

Eddie Perry
Ennis Center
Eric Hans
Eric Velliky
Erika and Jim Lafrate
Fitness Things
Fred Hajar
Freddie Abiaad
Fresh Era
Gabriela Hejka
Gail Gotthelf
Gary Woodworth
George Henry
George McMullen
George Pappas
Gerard Meter
Gilles Renard
Give With Liberty
Golf Planner Pro
Gordon Fall
Grace Farr
Gregory Hoffman
Gretchen Guisbert
Growth Works
Hands of Hope
Heidi Voorhies
Hezekiah Williams
Holly McWilliams
HSAWCF
Interior Environments
Iris and Jim Fuller
JAC Technology
Jake White
James Fuller
James Jarjosa
James Lafrate
Jamie Wakey
Jane James
Jason Cortez
Jason Medeiros
Jeff Iverson
Jeffrey Peariso
Jennifer Assaf
Jennifer Carlson
Jennifer Somers
Jennifer Wollack
Jennifer York

DONOR RECOGNITION

Jenny James
Jerry Parker
Jessica Gartrell
Jessica Heyde
Jessica James
Joe Hasselblad
Jon Carlson
Jon Smalley
Joseph Corey
Joseph Laurencelle
Joseph Vassallo
Julie James
Julie Netzky
Justin Near
Karen & Brian Martensen
Katie & Ty Morrison
Katy Haggis
Katy Maiolatesi
Kevin Macklem
Kiwanis Club of Woodhaven
Kristjan Fournune
Kristy & Pat Sharrow
Krystin Kreschmer
Kyle Mansour
Lance Martinez
Larry Defiore
Laura Rubens
Lauren Dinverno
Lauren Girson
Laurie Aren
Laverne Robinson
Lawrence Cavanaugh
Lexi Judkins
Linda King
Linda Liyab
Lisa Williams
Logeman, lafrate & Logeman
Loprete & Lyneis
Lora Boka
Lori Smith
Loyaltee
Lucas Whitney
Lynsey Marchwinski
Maackenzie Sterr
Mackenzie Smith
Manal Haddad
Marc & Lauren Ranke

Marco Technologies
Margaret McKinney
Mark James
Mark Music
Marty Daly
Matt & Kelly Jambright
Matt Lucas
Matt Schommer
Matthew Wolkhamer
Matthew Wollack
Megan Gutierrez
Megan Kate
Meghan Carter
Melissa Meike
Michael & Karen Paciorek
Michael Vanconant
Michael Varghese
Michael Williams
Michelle Gregory
Michigan Department of Agriculture
and Rural Development
Mike & Missy Cosby
Mike Shehadi
Missy Johnson
Misun Ebert
Mitch Mulcahey
Mittens for Detroit
Muchmore, Harrington and Smalley
My Hopes 4U
Natalie Rude
Nate Lowery
Near Perfect Media
Nestle
Network For Good
Nick Keane
Nicole Canonier
Nicole D'Onofrio
Nicole Dumanois
Nicole Sims
Nicole Wheeler
Nosh Pit Detroit
NTFF Charity Fund
Olivia Moore
Orchard's Children's Services
Our Shepherd Lutheran Church
Pamela Dymond
Paragon Properties

Patrick Higdon
Paul Brochert
Paul McGarry
Paul Whitney
Pharmaceutical Medical Consulting
PLLC
Pharmascript
Plastipak
Prime Office Innovations
Rachel Donovan
Rachel Gehm
Rania Haddad
Ray Barta
Richard Ochoa
Rick Rothermel
Robert & Judith Wollack
Robert Ennis
Robert Farris
Robert Rein
Robin Ceane
Roger Swaninger
Ronnie Hamama
Russell Nixon
Ryan & Sarah Zengerle
Ryan Derderian
Sally & Scott O'Neil
Sarah Simmons
Sazerac
Sellers GMC
Seth Helfman
Shane Marosi
Shannon Bush
Sharaya Hoverman
Sharisse Myren
Shaylin McCann
Shelton Manley
Shiela Jones
Shift-Up
Shirley A. Fischer
Sierra Station
Sonja Williams
Sorella's Custon Cakes
Spectrum Human Services
Stacey Fuller-Karson
State of Michigan
Stephanie Ebert
Stephanie Harmon

DONOR RECOGNITION

Steve Reedy
Steven Kashat
Susan Eaton
Sveta Desai
Sydney James
Tabetha Martel
Taylor Hines
Ted Shottroff
The Art Foundation
The Collective Academy
The Henry Ford
The Marshall Mathers Foundation
The Salvage Group
The WHLGN
Thomas & Lyn Marie Rogers
Thomas Group Consulting
Tiffany Raymond
Tilton & Dunn
Tim Kilsz
Tina Daniels
Tobias Kpadenou
Tom Krolicki
Tony Roko
Torrent Consulting
Trish Thane
Troy Murray
Truist
TV Online Store
U of M School of Social Work
United Fresh Start Foundation
USA Insulation
Vassar Rotary Club
Virtue Cider
Vivian Howell
Walmart
Warde Manuel
Yaldo Eye Center
Young Family Foundation

EMPLOYEE DONORS

Arizat Adams
Rebecca Albrecht
Erica Amerson
Lynette Amos
Keisha Anderson
Lashawn Anderson
Stephen Baber
Leticia baker
Kara Barkman
Stephen Billings
Terrell Bland
Sheri Boyd
Teaira Boykin
Jacqueline Branch
JoAnn Brannon
Candace Brazil
Derek Brewton
Lisa Brink
Melinda Briones
Jynice Brown
Terrell Calloway
Rachel Campbell
Michael Case
Nickeya Chapman
Aspen Cleveland
Donae Coleman
Laurie Collins
Dulles Copedge
Javonna Cornwall
Ameena Curry
Jazmine Dalpiaz
Ashley Dart
Laura Decarlo
Sandra Demarais
Brittany Dickey
Jasmine Dillard
Cherelle Dixon
Robert Doster
Tommie Dowdley
Nicole Dumanois
Kevin Edwards
Kristi Einem-Smith
Karen Evans

Kaelin Felton
Taylor Fischer
Niya Ford
Amanda franks
Tracy Frazier
Stacey Fuller-Karson
Luke Funston
Ada Fuqua
Isiah Garland
Alwanda Gibson
Maurice Gilmer
Kenton Gleason
Kyle Golson
Stephanie Graczyk Wenzel
Jalen Graham
Anna Greenblatt
Bria Gregory
Mantrese griffin
Sara Grunkemeyer
Delores Guerra-Schnapp
Krystal Guffey
Chris Haines
Christopher Hare
Patricia Harris
Kirkland Harshaw
Almira Haslam
Alexis Homing
Mark Howard
Brian Hufford
Rose Hunter
Amber Huyghe
Angela Jaszewski
William Jennings
Eboni Jett
Louis Johnson Jr.
Carolyn Johnson
David Johnson
Nyeshia Johnson
Yulonda Johnson
Tracy Jones
Keith Jordan
Yolanda Jordan
James Keene

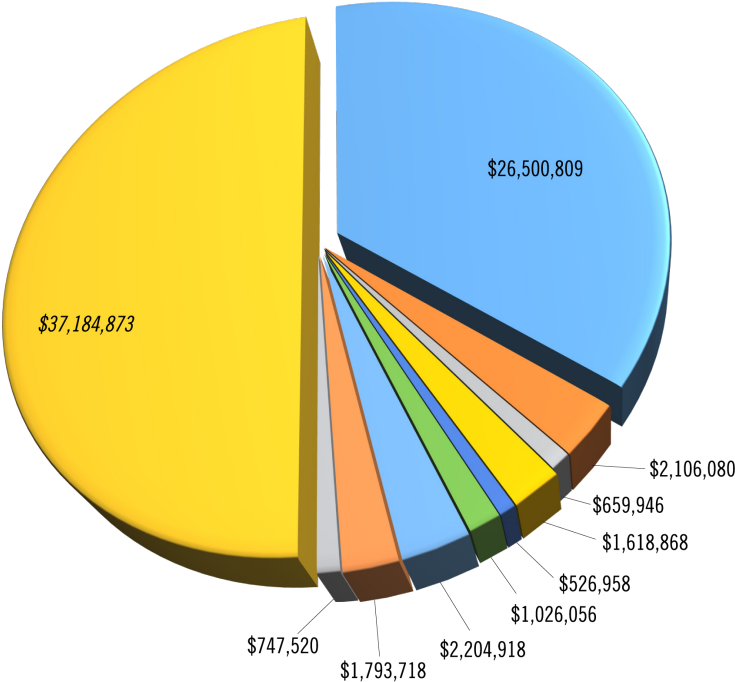
Thomas Krolicki
Alex Lacoste
Jeff Lee
Sharod Leggett
Carolyn Lewis
Stephanie Logan
Merima Logo
Yolanda Lomax
Matthew Mallory
Kiara Marshall
Galen Martin
Marsel Martin
Victor Martin
Kai Mason
Christopher Mavin
Derrick McCree
Larry McCullough
April McCullum
Christina McGuffie
Ronald McWhite
Cirvin Merrill
Caroline Mielke
Nancy Miller
DeMarcus Moore
Nolan Moore
Sharlet Moore
Dawnitta Morris
Megan Moss
Tena Murray
Courtney Neiderquill
Kizzy Nieves
Joyce Oliver
Taylor Olrich
Larry Patterson
Elizabeth Paul
Elaine Pecinis
Azanean Petty
Ann Phillips
Jerry Pickens
Christy Poulos
Tiffany Pringle
Kela Qualls
Jeneece Randle

EMPLOYEE DONORS

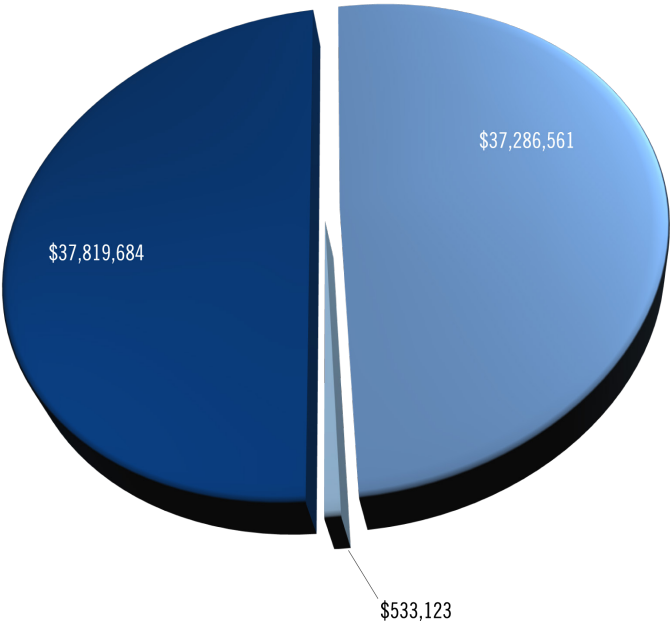
Jerome Reeves
Sherri Richards
Jalen Robinson
Shawauna Robinson
Tyshana Robinson
Jessica Rodgers
Renisha Roulhac
Therese Rowell
Genevieve Rutkowski
Jermaine Sanders
Andre Sandford
Roxann Santos
Annette Schlosser
Chanceya Shelton
Tameka Simmons
Donyeal Sizemore
Luvinia Skinner
Mark Snow
Benjamin Starr
John Starr
Cheryl Stewart
Nicole Stratton
Jill Szagesh
Wayne Szagesh
Inga Taylor
Olivia Taylor
Lonnie Terrell
Nathaniel Thomas
Derek Thornton
Marvin Travis
Kalsey Vanalst
Dayshia Vance
Brian Walker
Lorene Wamsley
Michaeline Ward-Terry
Rhonda Washington
Rachelle Whitfield
Paul Whitney
Janac Wicker
Jennie Wicox
Angel Williams
Daelon Williams
Sonja Williams

Michella Wilson
Raquel Wingate
Judith Wollack
Matthew Wollack
Robert E. Wollack
Lynne Yeck
Letavia Young
Kayla Yuhase
Teresa Zumbach

FINANCIAL REPORT



- EXPENSES**
- Supervision and Treatment: \$26,500,809
 - Supplies: \$2,106,080
 - Communication: \$659,946
 - Facilities & Equipment: \$1,618,868
 - Transportation: \$526,958
 - Specific Assistance: \$1,026,056
 - Other Operational: \$2,204,918
 - Depreciation: \$1,793,718
 - Interest: \$747,520
 - Total: \$37,184,873**



- Government: \$37,286,561
- Other: \$533,123
- Total: \$37,819,684**

REVENUES OVER EXPENSES: \$634,811



WOLVERINEHS.ORG